

APPENDIX E

Phase I and II Cultural Resources Survey Report

A PHASE I AND II CULTURAL RESOURCES STUDY FOR THE CYPRESS POINT PROJECT

CITY OF OCEANSIDE

APN 158-301-46

Submitted to:

City of Oceanside
Community Development Department
300 North Coast Highway
Oceanside, California 92054

Prepared for:

Concordia Homes
380 Stevens Avenue, Suite 307
Solana Beach, California 92075

Prepared by:

Tracy A. Stropes, M.A., RPA,
Jillian L.H. Conroy, B.A.,
and Brian F. Smith, M.A.
Brian F. Smith and Associates, Inc.
14010 Poway Road, Suite A
Poway, California 92064



October 27, 2020

Archaeological Database Information

Authors: Tracy A. Stropes, M.A., RPA, Jillian L.H. Conroy, B.A., and Brian F. Smith, M.A.

Consulting Firm: Brian F. Smith and Associates, Inc.
14010 Poway Road, Suite A
Poway, California 92064
(858) 484-0915

Report Date: October 27, 2020

Report Title: A Phase I and II Cultural Resources Study for the Cypress Point Project, City of Oceanside (APN 158-301-46)

Prepared for: Concordia Homes
380 Stevens Avenue, Suite 307
Solana Beach, California 92075

Submitted to: City of Oceanside
Community Development Department
300 North Coast Highway
Oceanside, California 92054

USGS Quadrangle: *San Luis Rey, California (7.5 minute)*

Study Area: 7.38 acres

Key Words: Archaeological study of 7.38 acres; archaeological survey and testing; shell scatter; not significant; USGS *San Luis Rey* Quadrangle (7.5 minute); monitoring recommended.

Table of Contents

	<u>Page</u>
1.0 MANAGEMENT SUMMARY/ABSTRACT	1.0-1
2.0 INTRODUCTION.....	2.0-1
3.0 PROJECT SETTING	3.0-1
3.1 Natural Setting.....	3.0-1
3.1.1 Geology.....	3.0-1
3.1.2 Biology.....	3.0-1
3.2 Cultural Setting	3.0-2
3.2.1 Paleoenvironment	3.0-2
3.2.2 Prehistory.....	3.0-2
3.2.3 History.....	3.0-5
3.2.4 General History of the City of Oceanside.....	3.0-7
4.0 RESEARCH DESIGN	4.0-1
4.1 Research Goals.....	4.0-1
5.0 METHODOLOGY	5.0-1
5.1 Archaeological Records Search	5.0-1
5.2 Native American Consultation.....	5.0-1
5.3 Field Methodology	5.0-2
5.3.1 Field Survey.....	5.0-2
5.3.2 Subsurface Testing.....	5.0-2
5.4 Laboratory Analysis.....	5.0-3
5.4.1 Artifact Sorting and Analysis.....	5.0-3
5.5 Provisions for the Discovery of Human Remains	5.0-4
5.6 Recordation and Curation.....	5.0-4
5.7 Applicable Regulations	5.0-4
5.7.1 California Environmental Quality Act.....	5.0-4
6.0 RESULTS.....	6.0-1
6.1 Records Search Results	6.0-1
6.2 Results of the Field Survey	6.0-3
6.3 Results of Significance Testing.....	6.0-8
6.4 Discussion	6.0-12
7.0 RECOMMENDATIONS	7.0-1
8.0 CERTIFICATION.....	8.0-1
9.0 REFERENCES CITED	9.0-1

Appendices

- Appendix A – Resumes of Key Personnel
- Appendix B – Archaeological Records Search Results*
- Appendix C – NAHC Sacred Lands File Search Results*
- Appendix D – Confidential Map*

**Deleted for public review and bound separately in the Confidential Appendix*

List of Figures

	<u>Page</u>
Figure 2.0–1 General Location Map	2.0–2
Figure 2.0–2 Project Location Map.....	2.0–3
Figure 2.0–3 Site Plan	2.0–4
Figure 6.3–1 Excavation Location Map*	6.0–9
Figure 6.3–2 East Wall Profile of Trench 3	6.0–11

**Deleted for public review and bound separately in the Confidential Appendix*

List of Plates

Plate 6.2–1 Overview of the project, facing northwest.....	6.0–4
Plate 6.2–2 Overview of the northernmost drainage trench, facing northeast.....	6.0–5
Plate 6.2–3 Overview of one of the walking paths, facing northwest	6.0–5
Plate 6.2–4 Overview of the unconsolidated prehistoric shell scatter, facing southeast.....	6.0–6
Plate 6.2–5 View of <i>Ostrea</i> sp. and <i>Chione</i> sp. shell identified during the survey.	6.0–7
Plate 6.2–6 View of <i>Donax</i> sp. shell identified during the survey	6.0–7
Plate 6.3–1 East wall profile of Trench 3	6.0–8

List of Tables

Table 6.1–1 Previously Recorded Archaeological Sites Within a One-Mile Radius of the Project.....	6.0–1
Table 6.1–2 Archaeological Studies Conducted Within Portions of the Project	6.0–2
Table 6.3–1 Trench Excavation Data.....	6.0–10

1.0 MANAGEMENT SUMMARY/ABSTRACT

In response to a request from Concordia Homes, Brian F. Smith and Associates, Inc. (BFSA) conducted a Phase I and II cultural resources study of the Cypress Point Project in the city of Oceanside in northern San Diego County, California. The assessment was conducted as part of the environmental clearance required for the single-family housing development proposed for the subject property. The evaluation program was conducted in accordance with the California Environmental Quality Act (CEQA), Section 15064.5, and the City of Oceanside's cultural resource guidelines to determine the presence of any archaeological or historic resources that would be affected by the proposed project and whether these resources meet the eligibility requirements for the California Register of Historical Resources (CRHR).

A records search was reviewed from the South Coastal Information Center (SCIC) at San Diego State University (SDSU) to identify previously discovered archaeological sites in the project area and a Sacred Lands File (SLF) search was requested from the Native American Heritage Commission (NAHC) to list potentially sacred or ceremonial sites or landforms on or near the project. The records search was negative for the presence of cultural resources within the project boundaries, but 21 previously recorded cultural resources and six historic addresses were identified within one mile of the project. The NAHC SLF search returned positive results (see Appendix C), which are further discussed in Section 5.2.

Senior Archaeologist Tracy A. Stropes, M.A., RPA, under the direction of Principal Investigator Brian F. Smith, M.A., conducted the archaeological survey of the project on September 14, 2020 with participation by Cami Mojado from the San Luis Rey Band of Mission Indians. The subject property is an undeveloped lot with two man-made drainage trenches in the northern and southern portions of the project. The property has been disked and leveled in the past, although it is unclear if it has been previously graded. Aerial photographs from 1946 and 1953 show that between those years, the entire area north of Pala Road had been cleared and graded. Additionally, three walking trails cross the project in the northern, central, and southern portions of the property. As a result, the native landform and soil have been impacted by previous use. Although visibility was poor throughout the project due to dense vegetative ground cover, remnant evidence of an unconsolidated prehistoric shell scatter was identified during the survey. Similar cultural sites characterized by shell scatters are recorded along the San Luis River floodplain.

As a result of the survey, it was determined that the proposed development of the property could result in direct impacts to buried cultural deposits. As such, an additional Phase II study was conducted to augment the Phase I level of work to further explore the potential for intact resources, determine if the shell is a secondary deposit from flooding episodes of the San Luis Rey River, and, if intact resources are present, what mitigation measures are needed to reduce the level of impacts associated with the proposed development. Given the amount of vegetation covering the property, a limited trenching program was conducted to sample areas along the floodplain to

ensure that any buried cultural resources were documented prior to the development of the project.

BFSA archaeologists Clarence Hoff and James Shrieve conducted a testing and evaluation program and trench sampling program on October 14, 2020 with participation by Banning Taylor from the San Luis Rey Band of Mission Indians. Results of archaeological testing identified a highly disturbed prehistoric deposit containing a low frequency of shell and a single prehistoric ceramic fragment. The soil matrix containing the prehistoric materials within the subject property appears to have been heavily impacted by agricultural use and landform modification over time. The dispersed nature of the shell within the historic floodplain of the San Luis Rey River suggests that the shell may represent a secondary deposit from resources further upstream. Because the current testing program did not produce any significant artifacts or intact subsurface deposits, and because the identified subsurface deposit lacks integrity, it was determined to not qualify as a Historical Resource, is not significant according to CEQA criteria, and is not eligible for designation on the CRHR. However, given the presence of subsurface prehistoric materials, mitigation monitoring is recommended as a condition of project approval.

A copy of this report will be permanently filed with the SCIC at SDSU. All notes and other materials related to this project will be curated at the BFSA archaeological laboratory in Poway, California.

2.0 INTRODUCTION

The Phase I and II cultural resources study for the Cypress Point Project was conducted in conformance with CEQA and the City of Oceanside's environmental guidelines. The project is located directly west of the terminus of Aspen Street in the eastern portion of the city of Oceanside, San Diego County, California (Figure 2.0-1). The project includes Assessor's Parcel Number (APN) 158-301-46 and is situated within Section 7, Township 11 South, Range 4 West, San Bernardino Base and Meridian, as shown on the USGS *San Luis Rey* 7.5-minute topographic quadrangle (Figure 2.0-2). The project proposes to develop the 7.38-acre lot into 52 single-family homes with associated landscaping and infrastructure (Figure 2.0-3).

An archaeological records search for the project was conducted at the SCIC at SDSU, which reported that 21 cultural resources have been previously recorded within one mile of the project, none of which are within the project boundaries. One hundred and one previous cultural resource studies have been conducted within one mile of the project, six of which included portions of the subject property (Carrillo 1982; Carrico 1990; Franklin and Carrico 1978; Carrico and Franklin 1979; New Horizons Planning Consultants, Inc. 1987; Wade and Hector 1989).

Principal Investigator Brian F. Smith, M.A. directed the cultural resources study for the project. The initial archaeological survey was conducted on September 14, 2020 by Senior Archaeologist Tracy A. Stropes, M.A., RPA with participation by Cami Mojado from the San Luis Rey Band of Mission Indians. During the archaeological field survey, an unconsolidated scatter of prehistoric shell was identified in the northern portion of the project. The marine shell was observed within previously impacted soil brought up to the surface by the development of a drainage ditch that runs northwest to southeast across the northern portion of the parcel. The presence of the prehistoric material indicated a potential for subsurface deposits to also be present.

To investigate the potential for buried deposits across the project, BFSA archaeologists Clarence Hoff and James Shrieve conducted a testing and evaluation program and trench sampling program on October 14, 2020 with participation by Banning Taylor from the San Luis Rey Band of Mission Indians. Thirteen test trenches were mechanically excavated and screened to determine if cultural resources were present within the subsurface portion of the property. The testing program was conducted prior to grading in order to facilitate the identification of any significant subsurface archaeological deposits and, if significant deposits or features were identified, to outline measures needed to achieve the mitigation of impacts. The testing program recovered 20 fragments of marine shell (21.2 grams) and one piece of prehistoric ceramic.

Because no prehistoric features or significant deposits were identified during the study, the likelihood for significant archaeological deposits associated with the proposed development is low. No site-specific mitigation measures are recommended since the deposit is evaluated as not CEQA-significant, is not considered a Historical Resource, and is not eligible for designation on the CRHR; however, construction monitoring will be necessary because the potential still exists that historic or prehistoric features or deposits could be encountered during grading.

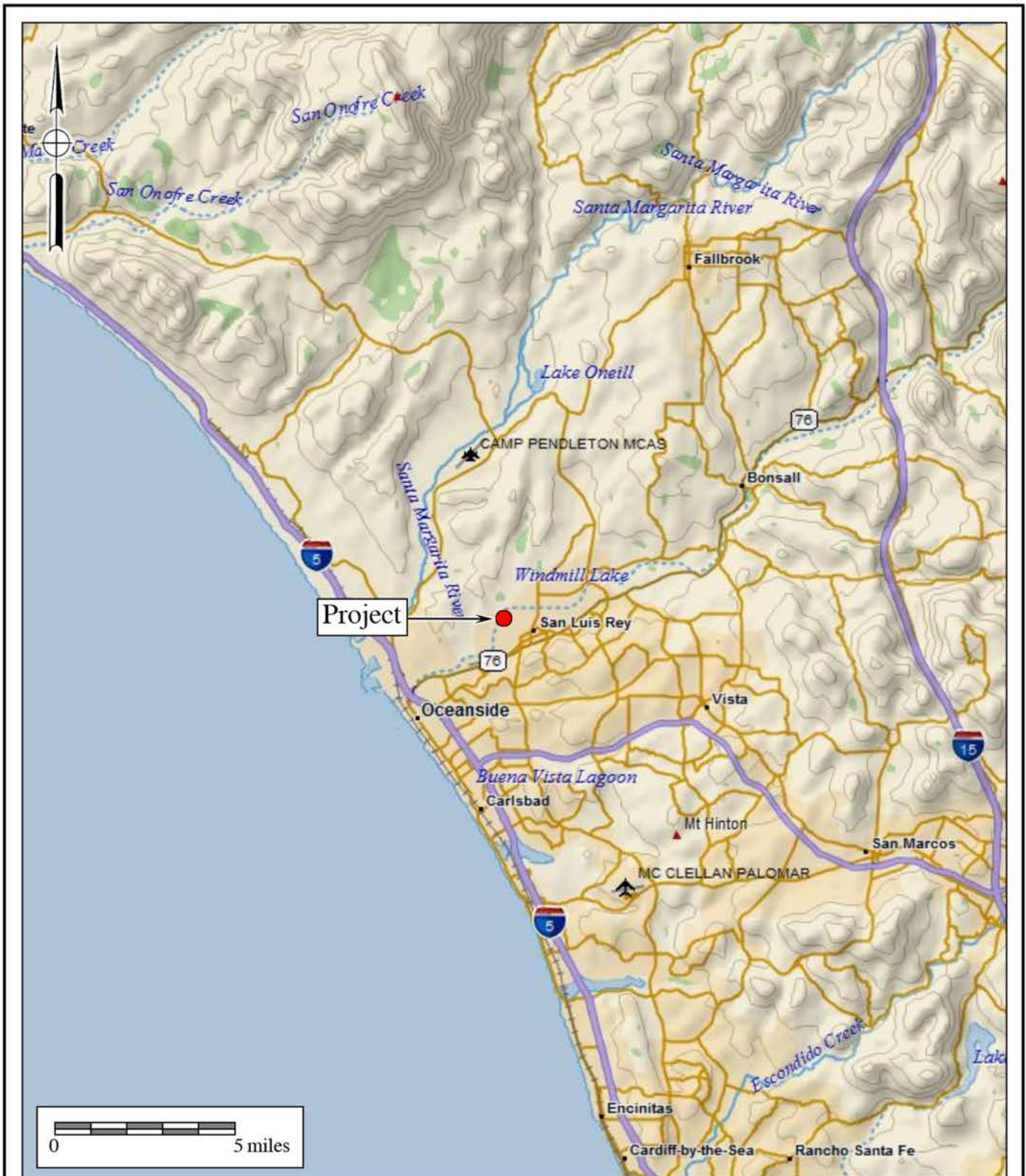


Figure 2.0-1
General Location Map
 The Cypress Point Project
 DeLorme (1:250,000 series)



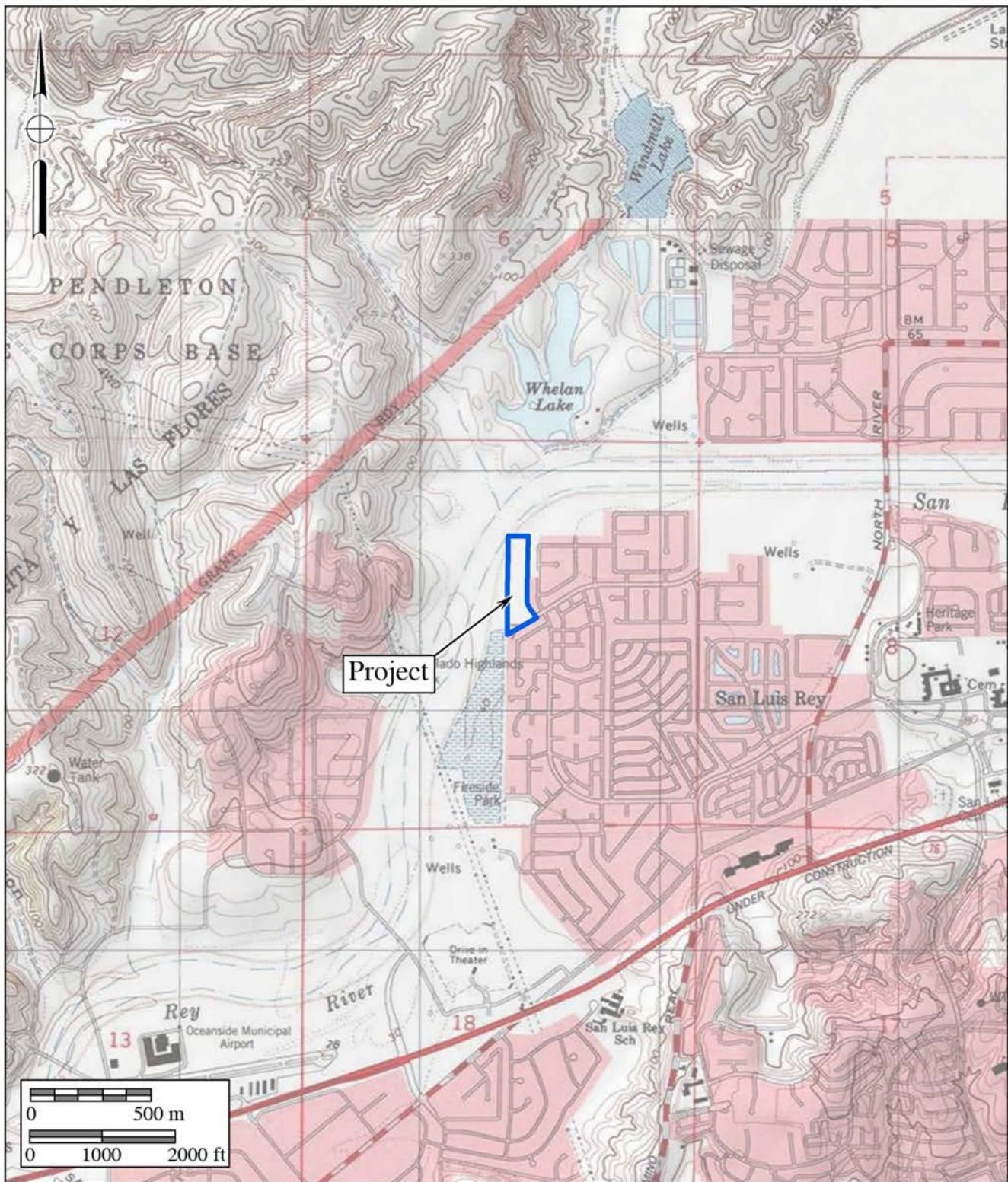


Figure 2.0-2
Project Location Map
 The Cypress Point Project

USGS *San Luis Rey* Quadrangle (7.5-minute series)



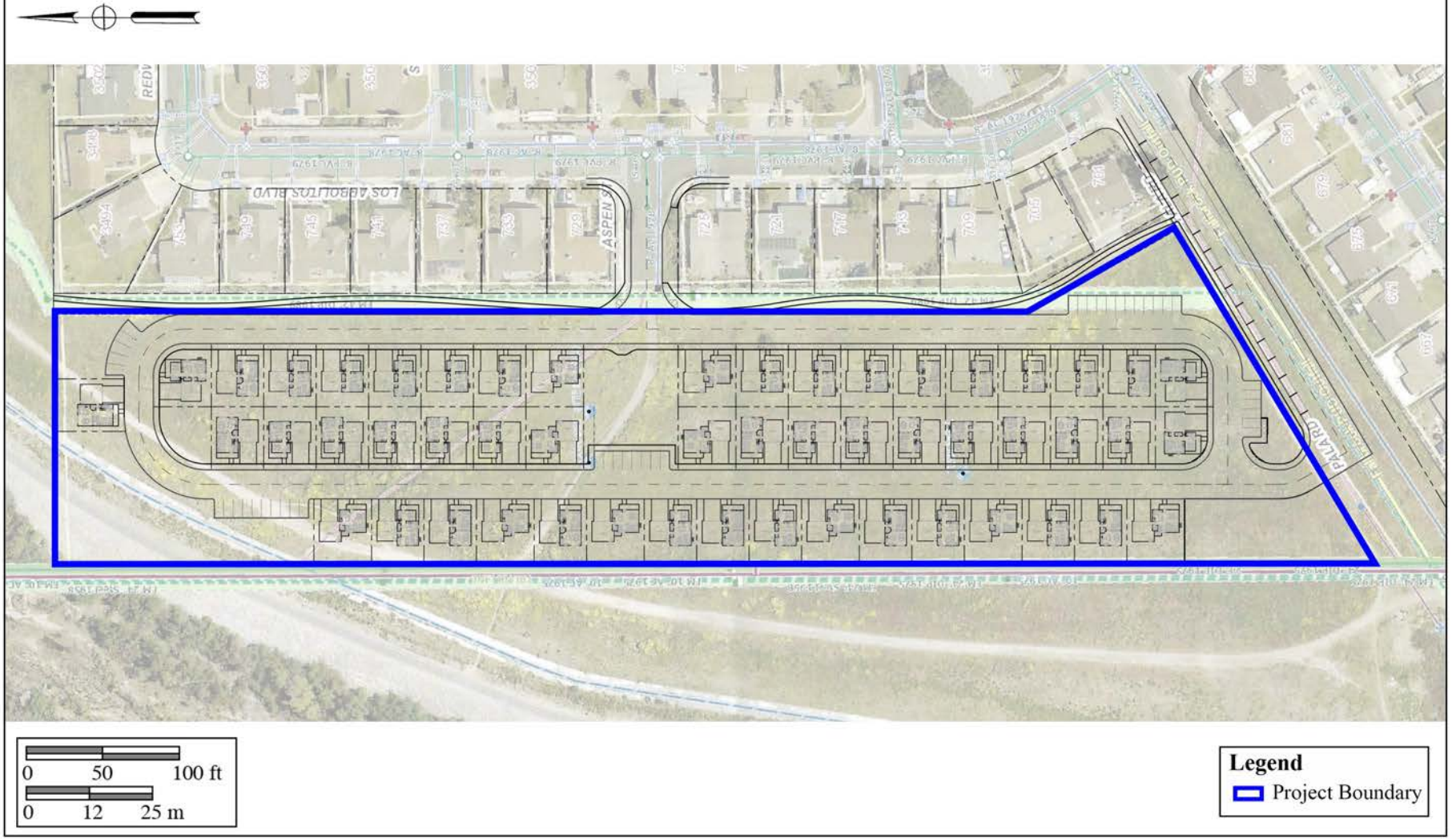


Figure 2.0-3
Site Plan
The Cypress Point Project



Tracy Stropes, Jillian Conroy, and Brian Smith prepared the technical report, Tracy Stropes and Jillian Conroy prepared the report graphics, and Elena Goralogia conducted technical editing and report production. Qualifications of key personnel are provided in Appendix A.

3.0 SETTING

The project setting includes the physical context of the project, as well as the cultural setting of prehistoric and historic human activities in the general area.

3.1 Natural Setting

The project area lies within the city of Oceanside, located directly west of the terminus of Aspen Street along the southern bank of the San Luis Rey River and north of Highway 76. Vegetation consists of native grasses throughout the project area overlying Tujunga sandy deposits, 0 to 5 percent slopes (USDA NRCS 2019). The project property has been previously graded and elevations range from 44 to 51 feet above mean sea level (AMSL).

3.1.1 Geology

San Diego County lies in the Peninsular Ranges Geomorphic Province of southern California, a geologic unit that extends from the southern Los Angeles Basin south to the tip of Baja California. Extensive Cretaceous and minor Jurassic igneous rocks dominate the Peninsular Ranges. Post-Cretaceous rocks consist of volcanic, marine, and nonmarine sediments (Norris and Webb 1990). The mountainous zone, which lies in a northwest to southeast trend through the county, extends to 6,533 feet AMSL (Beauchamp 1986). Foothills and valleys, known as the cismontane, extend west from the mountains. A coastal plain occupies the western portion of San Diego County and is characterized by a sequence of marine and nonmarine sedimentary rocks in a mesa formation (Deméré and Walsh 1993). That coastal mesa region is cut by several large drainages originating in the mountains and foothills. Large bays and lagoons characterize the coastal zone where the major drainages empty into the sea. The portion of the mesas that terminate at the ocean form intervening bluffs (Beauchamp 1986).

3.1.2 Biology

Rainfall is one of the most important factors, along with soils, that control the development of plant regimes along the western side of the Peninsular Ranges. This semi-arid Mediterranean climate has developed vegetative communities in response to differing rainfall amounts and soil types. Cismontane regions typically receive more rainfall than the coastal mesa due to the orographic effect upon the predominately east-moving moist air. Coastal sage scrub is the dominant community near the coast, while the plant community grades to oak woodland in the upper cismontane. Drainages exhibit riparian woodland environments, particularly where the slope is gentle and soil has accumulated.

3.2 Cultural Setting

The project is located along the southern bank of the San Luis Rey River, which would have provided a rich and varied food resource that was less subject to the debilitating effects of limited seasonal rainfall than the inland areas of San Diego County. At the time of the first European colonization (1769), and for a period of time thereafter, Native American people used resources from the bay and adjacent wetland areas (Gallegos and Kyle 1988).

The cultures that have been identified in the general vicinity of the project consist of a possible Paleo Indian manifestation of the San Dieguito Complex, the Archaic and Early Milling Stone horizons represented by the La Jolla Complex, and the Late Prehistoric Kumeyaay culture. The area was used for ranching and farming following the Hispanic intrusion into the region and extending into the historic period. A brief discussion of the cultural elements within the project is provided below.

3.2.1 Paleoenvironment

Because of the close relationship between prehistoric settlement and subsistence patterns and the environment, it is necessary to understand the setting in which these systems operated. At the end of the final period of glaciation, approximately 10,000 to 11,000 years before the present (YBP), the sea level was considerably lower than it is now; the coastline at that time would have been two to two and a half miles west of its present location (Smith and Moriarty 1985a, 1985b). At approximately 7,000 YBP, the sea level rose rapidly, filling in many coastal canyons that had been dry during the glacial period. The period between 7,000 and 4,000 YBP was characterized by conditions that were drier and warmer than they were previously, followed by a cooler, moister environment similar to the present-day climate (Robbins-Wade 1990). Changes in sea level and coastal topography are often manifested in archaeological sites through the types of shellfish that were utilized by prehistoric groups. Different species of shellfish prefer certain types of environments, and dated sites that contain shellfish remains reflect the setting that was exploited by the prehistoric occupants.

Unfortunately, pollen studies have not been conducted for this area of San Diego; however, studies in other areas of southern California, such as Santa Barbara, indicate that the coastal plains supported a pine forest between approximately 12,000 and 8,000 YBP (Robbins-Wade 1990). After 8,000 YBP, this environment was replaced by more open habitats, which supported oak and non-arboreal communities. The present coastal sage scrub and chaparral environments appear to have become dominant after 2,200 YBP (Robbins-Wade 1990).

3.2.2 Prehistory

In general, the prehistoric record of San Diego County has been documented in many reports and studies, several of which represent the earliest scientific works concerning the recognition and interpretation of the archaeological manifestations present in this region. Geographer Malcolm Rogers initiated the recordation of sites in the area in the 1920s and 1930s,

using his field notes to construct the first cultural sequences based upon artifact assemblages and stratigraphy (Rogers 1966). Subsequent scholars expanded the information gathered by Rogers and offered more academic interpretations of the prehistoric record. Moriarty (1966, 1967, 1969), Warren (1964, 1966), and True (1958, 1966) all produced seminal works that critically defined the various prehistoric cultural phenomena present in this region (Moratto 1984). Additional studies have sought to further refine these earlier works (Cardenas 1986; Moratto 1984; Moriarty 1966, 1967; True 1970, 1980, 1986; True and Beemer 1982; True and Pankey 1985; Waugh 1986).

In sharp contrast, the current trend in San Diego prehistory has resulted in a revisionist group that rejects the established cultural, historical sequence for San Diego (Warren et al. 1998), replacing the concepts of La Jolla, San Dieguito, and all of their other manifestations with an extensive, all-encompassing, chronologically undifferentiated cultural unit that ranges from the initial occupation of southern California to around A.D. 1000 (Bull 1983, 1987; Ezell 1983, 1987; Gallegos 1987; Kyle et al. 1990; Stropes 2007). For the present study, the prehistory of the region is divided into four major periods: Early Man, Paleo Indian, Early Archaic, and Late Prehistoric.

Early Man Period (Prior to 8500 B.C.)

At the present time, there has been no concrete archaeological evidence to support the occupation of San Diego County prior to 10,500 YBP. Some archaeologists, such as Carter (1957, 1980) and Minshall (1976), have been proponents of Native American occupation of the region as early as 100,000 years ago. However, their evidence for such claims is sparse at best and they have lost much support over the years as more precise dating techniques have become available for skeletal remains thought to represent early man in San Diego. In addition, many of the “artifacts” initially identified as products of early man in the region have since been rejected as natural products of geologic activity. Some of the local proposed Early Man Period sites include Texas Street, Buchanan Canyon, Brown, Mission Valley (San Diego River Valley), Del Mar, and La Jolla (Bada et al. 1974; Carter 1957, 1980; Minshall 1976, 1989; Moriarty and Minshall 1972; Reeves 1985; Reeves et al. 1986).

Paleo Indian Period (8500 to 6000 B.C.)

For the region, it is generally accepted that the earliest identifiable culture in the archaeological record is represented by the material remains of the Paleo Indian Period San Dieguito Complex. The San Dieguito Complex was thought to represent the remains of a group of people who occupied sites in this region between 10,500 and 8,000 YBP, and who were related to or contemporaneous with groups in the Great Basin. As of yet, no absolute dates have been forthcoming to support the antiquity attributed to this cultural phase. The artifacts recovered from San Dieguito Complex sites duplicate the typology attributed to the Western Pluvial Lakes Tradition (Moratto 1984; Davis et al. 1969). These artifacts generally include scrapers, choppers, large bifaces, and large projectile points, with few milling tools. Tools recovered from San Dieguito Complex sites, along with the general pattern of their site locations, led early researchers

to believe that the people of the San Dieguito Complex were a wandering hunter/gatherer society (Moriarty 1969; Rogers 1966).

The San Dieguito Complex is the least understood of the cultures that have inhabited the San Diego County region. This is due to an overall lack of stratigraphic information and/or datable materials recovered from sites identified as belonging to the San Dieguito Complex. Currently, controversy exists among researchers regarding the relationship of the San Dieguito Complex and the subsequent cultural manifestation in the area, the La Jolla Complex. Although, firm evidence has not been recovered to indicate whether the San Dieguito Complex “evolved” into the La Jolla Complex, the people of the La Jolla Complex moved into the area and assimilated with the people of the San Dieguito Complex, or the people of the San Dieguito Complex retreated from the area because of environmental or cultural pressures.

Early Archaic Period (6000 B.C. to A.D. 0)

Based upon evidence suggesting climatic shifts and archaeologically observable changes in subsistence strategies, a new cultural pattern is believed to have emerged in the San Diego region around 6000 B.C. Archaeologists believe that this Archaic Period evolved from or replaced the San Dieguito Complex culture, resulting in a pattern referred to as the Encinitas Tradition. In San Diego, the Encinitas Tradition is believed to be represented by the coastal La Jolla Complex and its inland manifestation, the Pauma Complex. The La Jolla Complex is best recognized for its pattern of shell middens and grinding tools closely associated with marine resources and flexed burials (Shumway et al. 1961; Smith and Moriarty 1985a). Increasing numbers of inland sites have been identified as dating to the Archaic Period, focusing upon terrestrial subsistence (Cardenas 1986; Smith 1996; Raven-Jennings and Smith 1999a, 1999b).

The tool typology of the La Jolla Complex displays a wide range of sophistication in the lithic manufacturing techniques used to create the tools found at their sites. Scrapers, the dominant flaked tool type, were created by either splitting cobbles or by finely flaking quarried material. Evidence suggests that after about 8,200 YBP, milling tools began to appear in La Jolla Complex sites. Inland sites of the Encinitas Tradition (Pauma Complex) exhibit a reduced quantity of marine-related food refuse and contain large quantities of milling tools and food bone. The lithic tool assemblage shifts slightly to encompass the procurement and processing of terrestrial resources, suggesting seasonal migration from the coast to the inland valleys (Smith 1996). At the present time, the transition from the Archaic Period to the Late Prehistoric Period is not well understood. Many questions remain concerning cultural transformation between periods, possibilities of ethnic replacement, and/or a possible hiatus from the western portion of the county.

Late Prehistoric Period (A.D. 0 to 1769)

A group of incoming Shoshonean people with a language belonging to the Uto-Aztecan linguistic group settled in the southern California area approximately 2,500 to 2,000 YBP (King 1982). In San Diego County, these people became known as the Luiseño Indians because of their

association with the San Luis Rey Mission during the early historic period (Moratto 1984). Their neighbors to the south, the Yuman-speaking Kumeyaay, were known as the Diegueño due to their residence near Mission Basilica San Diego de Alcalá. The geographic boundary in pre- and proto-historic times between the Luiseño and Diegueño is difficult to place due to the similarity of their tool kits and settlement patterns. Attempts have been made to differentiate between the two based upon archaeological assemblages; however, further investigation is necessary (True 1966).

The Luiseño people were hunter/gatherers with a seasonal migration, which included both the coastal and inland areas in their range. The annual round included hunting terrestrial game and gathering plant foods when available. Diet was augmented with marine resources during seasonal visits to the coast.

3.2.3 History

Exploration Period (1530 to 1769)

The historic period around San Diego Bay began with the landing of Juan Rodríguez Cabrillo and his men in 1542 (Chapman 1921). Sixty years after the Cabrillo expeditions (1602 to 1603), Sebastian Vizcaíno made an extensive and thorough exploration of the Pacific coast. Although the voyage did not extend beyond the northern limits of the Cabrillo track, Vizcaíno had the most lasting effect upon the nomenclature of the coast. Many of his assigned place names have survived, whereas nearly every one of Cabrillo's has faded from use. Cabrillo named the first (now) United States port "San Miguel"; 60 years later, Vizcaíno changed it to "San Diego" (Rolle 1969).

Spanish Colonial Period (1769 to 1821)

The Spanish occupation of the claimed territory of Alta California took place during the reign of King Carlos III of Spain (Engelhardt 1920). José de Gálvez, a powerful representative of the king in Mexico, conceived the plan to colonize Alta California and thereby secure the area for the Spanish (Rolle 1969). The effort involved military and religious components, where the overall intent of establishing forts and missions was to gain control of the land and the native inhabitants through conversion. Actual colonization of the San Diego area began on July 16, 1769, when a Spanish exploration party, commanded by Gaspar de Portolá (with Father Junípero Serra in charge of religious conversion of the native populations), arrived by the overland route to secure California for the Spanish (Palou 1926). The natural attraction of the harbor at San Diego and the establishment of a military presence in the area solidified its importance to the Spanish colonization of the region and the growth of the civilian population.

Missions were constructed from San Diego to as far north as San Francisco. The mission locations were based upon a number of important territorial, military, and religious considerations. Grants of land were made to those who applied, but many tracts reverted back to the government due to lack of use. As an extension of territorial control by the Spanish, each mission was placed so as to command as much territory and as large a population as possible. While primary access

to California during the Spanish Period was by sea, the route of El Camino Real served as the land route for transportation, commercial, and military activities within the colony. This route was considered to be the most direct path between the missions (Rolle 1969; Caughey 1970). As increasing numbers of Spanish and Mexican peoples, as well as the later Americans during the Gold Rush, settled in the area, the Native American populations diminished as they were displaced or decimated by disease (Carrico and Taylor 1983).

Mexican Period (1821 to 1846)

Father Miguel Hidalgo y Costilla and a group of Native American followers began a revolt against Spanish rule on September 16, 1810. Hidalgo did not succeed in the fight against the Spanish and was ultimately executed. However, the revolt continued, and the Spanish were finally defeated in 1821. Mexican Independence Day is celebrated on September 16 of each year in honor of Father Hidalgo's bravery. The revolution also had repercussions in the northern territories and by 1834, all of the mission lands in Alta California had been removed from the control of the Franciscan Order under the Acts of Secularization. Without proper maintenance, the missions quickly began to disintegrate. After 1836, missionaries ceased to make regular visits to the outlying Native American communities to minister their needs (Engelhardt 1920). Large tracts of land continued to be granted to those who applied or who had gained favor with the Mexican government, land grants were also used to settle government debts, and the Mexican government was called upon to reaffirm some older Spanish land grants shortly before the Mexican-American War in 1846 (Moyer 1969).

Anglo-American Period (1846 to Present)

California was invaded by United States troops during the Mexican-American War from 1846 to 1848. The acquisition of strategic Pacific ports and California land was one of the principal objectives of the war (Price 1967). At the time, the inhabitants of California were practically defenseless, and they quickly surrendered to the United States Navy in July 1847 (Bancroft 1886).

The cattle ranchers of the "counties" of southern California prospered during the cattle boom of the early 1850s. They were able to "reap windfall profit ... pay taxes and lawyer's bills ... and generally live according to custom" (Pitt 1966). However, cattle ranching soon declined, contributing to the expansion of agriculture. With the passage of the "No Fence Act," San Diego's economy shifted from stock raising to farming (Robinson 1948). The act allowed for the expansion of unfenced farms, which was crucial in an area where fencing material was practically unavailable. Five years after its passage, most of the arable lands in San Diego County had been patented as either ranchos or homesteads, and growing grain crops replaced raising cattle in many of the county's inland valleys (Blick 1976; Elliott 1883 [1965]).

By 1870, farmers had learned to dry farm and were coping with some of the peculiarities of San Diego County's climate (*San Diego Union* 1868; Van Dyke 1886). Between 1869 and 1871, the amount of cultivated acreage in the county rose from less than 5,000, to more than

20,000, acres (*San Diego Union* 1872). Of course, droughts continued to hinder the development of agriculture (Crouch 1915; *San Diego Union* 1870; Shipek 1977). Large-scale farming in San Diego County was limited by a lack of water and the small size of arable valleys. The small urban population and poor roads also restricted commercial crop growing. Meanwhile, cattle continued to be grazed in parts of inland San Diego County. In the Otay Mesa area, for example, the “No Fence Act” had little effect upon cattle farmers because ranches were spaced far apart and natural ridges kept the cattle out of nearby growing crops (Gordinier 1966).

During the first two decades of the twentieth century, the population of San Diego County continued to grow. The population of the inland portion of the county declined during the 1890s, but between 1900 and 1910, it rose by about 70 percent. The pioneering efforts were over, the railroads had broken the relative isolation of southern California, and life in San Diego County became similar to other communities throughout the west. After World War I, the history of San Diego County was primarily determined by the growth of San Diego Bay. In 1919, the United States Navy decided to make the bay the home base for the Pacific Fleet (Pourade 1967), as did the aircraft industry in the 1920s (Heiges 1976). The establishment of these industries led to the growth of the county as a whole; however, most of the civilian population growth occurred in the coastal areas in the northern portion of the county where the population almost tripled between 1920 and 1930. During this time period, the history of inland San Diego County was subsidiary to that of the city of San Diego, which had become a Navy center and an industrial city (Heiges 1976). In inland San Diego County, agriculture became specialized, and recreational areas were established in the mountain and desert areas. Just before World War II, urbanization began to spread to the inland parts of the county.

3.2.4 General History of the City of Oceanside

“On July 20, 1769, Father Juan Crespi arrived in the area known today as the San Luis Rey Valley, which was populated by Native Americans” (City of Oceanside 2020). Crespi’s report, which provided a flattering outlook on the area as a possible mission site, was a major contributing factor in the establishment of Mission San Luis Rey de Francia in 1798. “Three and a half miles from the present location of Oceanside, the mission prospered and came to be known as ‘King of the Missions.’ History and politics were to see the decline of the mission in the 1840s, but the area’s advantages were common knowledge by this date” (City of Oceanside 2020). After this time:

On May 10, 1841, Pio Pico and his brother, Andreas, received a grant of 133,441 acres from Governor Alvarado. Known as Rancho Margarita and Las Flores, this land grant is the present location of the Camp Pendleton Marine Corps Base. The rancho changed hands several times through the years. Andreas eventually sold his share to Pio for \$1,000; Pio then sold his share to his brother-in-law John Forster, an Englishman, for only \$14,000.

Forster died in 1882, and Richard O’Neill, a wealthy San Franciscan, purchased the rancho from the Forster estate for \$250,000. O’Neill sold half interest in the rancho to the “Bonanza King of California,” James C. Flood. The heirs of O’Neill and Flood held the property until 1942, when it was sold to the United States Navy.

Around the time O’Neill and Flood purchased the rancho, the California Southern Railway, a branch of the Santa Fe Railroad, was constructing a railway linking San Diego with San Bernardino. (City of Oceanside 2020)

This railway, which was completed in 1893, facilitated development within the beach areas of San Diego County, including what would later become the city of Oceanside.

Meanwhile, a small town had settled around the mission. A storekeeper there, Andrew Jackson “Jack” Myers, applied for a 160-acre homestead grant in the area just south of Rancho Santa Margarita (City of Oceanside 2020). J. Chauncey Hayes, an early resident in the area, handled the real estate for the new townsite, served as the justice of the peace, and established the town’s first post office under the name of “Ocean Side” (Hawthorne 2015). Going to “Ocean Side” was a popular weekend retreat for rancho families living in the warmer inland areas. The two words were eventually merged into “Oceanside.”

Early Oceanside grew at an extraordinary rate. By the time of the city’s incorporation date on July 3, 1888, the population of Oceanside was approximately 1,000. “By 1889, the Bank of Oceanside was built on the corner of Mission Avenue and South Coast Highway and also a grand hotel, the South Pacific, located on Pier View Way and Pacific Street, near the present pier” (City of Oceanside 2020). A wharf, made almost entirely of wood pilings, was erected at the location of what is now known as Wisconsin Street, in 1888. However:

In the winter of 1890-1891, the wharf was destroyed by a storm and Melchoir Pieper, the proprietor of the South Pacific Hotel, salvaged most of the lumber. He took the pilings to his hotel where he kept it until the City appropriated funds for a new pier in 1893. This second pier was the first of five built at the Pier View Way location, including the one recently completed in 1987. (City of Oceanside 2020)

At this time, in the 1890s:

[Oceanside had] three hotels [the South Pacific, the St. Cloud, and the Tremont], two drug stores, two livery stables, two blacksmiths, a hardware store, a bakery, a harness shop, a lumber yard, a barbershop, a newspaper, a school, and the Oceanside Bank, along with many other businesses. There were six churches: Christian, Congregational, Baptist, Episcopal, Holiness, and Methodist. (City of Oceanside 2020)

The railway continued to play an important role in the development of Oceanside, with the trains bringing thousands of businessmen, tourists, and prospective buyers from the inland areas. The railroad continued to be the primary method of transportation into the city until a paved highway had been established between the San Diego and Los Angeles areas by 1920 (City of Oceanside 2020). The highway, called the Pacific Highway (later Interstate 5), spurred a new era of growth in Oceanside:

Streetlights were installed, a new golf course was laid out, and a grand new theater, “The Palomar,” was built. The City’s slogan at the time was “Oceanside, California’s Pride.” Many noteworthy visitors enjoyed [the] shore, including Mary Pickford and Douglas Fairbanks, and a number of movies were filmed on location during this decade. (City of Oceanside 2020)

This development slowed during the Great Depression; however, in spite of economic depression, substantial progress continued through the 1930s, including the establishment of a new city hall on Pier View Way (City of Oceanside 2020). Additionally, Oceanside’s population grew from 3,508 in 1930 to 4,652 in 1940, according to United States Bureau of the Census figures (Hawthorne 2015).

World War II ushered in a new era of growth for Oceanside, with the establishment of the nation’s largest Marine Corps base, Camp Pendleton, just north of the city boundaries. Within a decade, Oceanside’s population jumped to 12,888 in 1950. “In 1952, a special census showed the city’s population exceeding 18,000 as the Marine Base grew with the Korean War, and more service-connected families moved into the area” (City of Oceanside 2020). Tri-City Hospital was constructed in the 1960s to meet the needs of a growing population. Oceanside Small Craft Harbor was also constructed in the 1960s. The harbor remains a tourist destination, and in addition to being the homeport of many pleasure boats, the marina harbors several sport fishing boats (City of Oceanside 2020). “A new downtown transit center was built in 1983, and in September of 1987, a sixth pier was dedicated just in time for Oceanside’s Centennial Celebration in 1988. The following year, the new Civic Center was constructed and became the cornerstone for downtown redevelopment” City of Oceanside 2020).

Throughout history, the mainstays of the Oceanside economy have been tourism and the military, due to the proximity of Camp Pendleton. Undoubtedly, the presence of the railroad traveling from inland communities to the shores of Oceanside provided significant change and development of local businesses and communities. Military families provided an influx of population growth and diversity, which continues to this day. Oceanside’s ideal climate has afforded agricultural and economic growth for decades, as well as supporting its beaches with ideal recreation and sporting opportunities.

4.0 RESEARCH DESIGN

The primary goal of the research design is to attempt to reconstruct the way in which humans have used the land and resources within the project area through time. As people used the area, evidence of their activities has been preserved on and in the ground. Archaeological methods are used to retrieve and analyze portions of this evidence to reconstruct past lifeways. This type of inquiry is a part of the cultural resources management aspect of environmental conformance studies. The Phase I survey and Phase II testing program for the Cypress Point Project included a records search, archival research, a field survey, test excavations, and the mapping of any features, artifacts, and locations of subsurface archaeological tests that were conducted. Primary objectives, such as the determination of the boundaries of any discoveries, depth of any archaeological deposits, stratigraphy, integrity, content, and spatial distribution of any subsurface artifacts and cultural ecofacts, is essential to the current test phase of the program.

The survey results indicated that the property contains potential for both historic and prehistoric deposits. Therefore, in addition to understanding the prehistoric use of the property, the questions outlined in the research design also include relevant topics that help facilitate a greater understanding of what the residents of the project area did during the historic period of the late nineteenth and early twentieth centuries, and how they changed throughout time. Questions of how these residents related to the environment, how they arranged themselves in space, and how they made a living all contribute details to the story of the history of the development of Oceanside. These studies not only contribute to the reconstruction of local history, but also to broader research topics currently being pursued in the San Diego County region and southern California in general. These questions help to answer the larger anthropological questions regarding how people historically adapt to and organize themselves under different social, economic, and environmental conditions.

Normally, a research orientation transcends these goals by expanding the meaning of information extracted from a site through the use of archaeological questions important in current scientific research; regional and temporal research issues should be taken into consideration when posing such questions. However, because the boundary of buried intact cultural resources is uncertain, the research design for the current project is limited in scope. The topics and associated research questions provided below address concerns specific to the project.

4.1 Research Goals

The primary goal of the research design is to attempt to understand the way in which people have used the land and resources within the project area through time, as well as to aid in determination of resource significance. As the main objective of the investigation is to identify the presence/absence and potential site significance of any cultural resources located within the designated impact areas, the goal of the research design is to investigate the role and importance of on-site cultural resources and determine if further mitigation measures are warranted. The

following discussion presents relatively focused research questions that are guided by the results of the Phase I investigations. The discussion includes a consideration of the types of data that are necessary in order to address the relevant research questions pertaining to the prehistoric and historic use of the project area. Therefore, this study focuses upon determining the role of the project and any identified cultural deposits within the context of the prehistoric and historic settlement of the city of Oceanside and the potential for any prehistoric and historic archaeological deposits. Specifically, investigation of cultural remains will focus upon the origin, association, and content of the deposits themselves, as related to the known history of the project area.

Integrity

In order for the data extracted from an archaeological site to address current research issues, it must be established that enough of the deposit remains to retain integrity. This is particularly true in the case of the current project, where major portions of the property have been previously disturbed by urban development and land modifications for agricultural activities. Therefore, in the case of the Cypress Point Project, integrity is as much an issue for determining appropriate degrees of mitigation as it is for addressing questions important in current scientific research. According to the CRHR, integrity is defined as “the authenticity of an historical resource’s physical identity evidenced by the survival of characteristics that existed during the resource’s period of significance.” All subsurface excavations should therefore be thoroughly investigated and their profiles and soil descriptions compared to ascertain the existing state of the stratigraphy of the deposit. Any observed disturbances should be weighed against the quality and quantity of data that was gathered during the testing program. Therefore, the following research questions must be addressed with regards to resource integrity:

Research Questions:

- How have the property and any archaeological deposits or features been disturbed?
- Does this portion of the deposit retain adequate integrity to yield important information?
- Given the location of the project within the historic floodplain of the San Luis Rey River, if present, do resources represent primary or secondary deposition?
- Are observed disturbances superficial or have they impacted the deposit to a greater depth?
- How does the existing topography compare to adjacent properties in terms of cut or fill?
- Have any disturbances compromised the ability to analyze material culture contextually?

The research questions presented here will be used to guide the accumulation of data at both the archival and archaeological levels, as well as the subsequent analysis of any recovered material. The results of the archival research, field investigation, and laboratory analysis will then be used to evaluate the significance of the identified deposits. If intact archaeological deposits are encountered, then additional research questions may be proposed and should include research areas based upon previous work, potential of available data to address questions, and possible overall contribution to the archaeological record. Specific research questions should focus upon chronology, lithic technology, settlement patterning, subsistence strategy, and trade/travel. These research topics and others should be used to guide the study and to determine the sample size necessary to provide sufficient materials to address these research questions.

5.0 METHODOLOGY

This study was conducted in conformance with Section 21083.2 of the California Public Resources Code and CEQA. Statutory requirements of CEQA (Section 15064.5) were followed in evaluating the significance of resources. Specific definitions for archaeological resource type(s) used for the project are those established by the State Historic Preservation Office (SHPO 1995). All reporting will follow the Office of Historic Preservation's (OHP) Archaeological Resource Management Report (ARMR) Guidelines (OHP 1990).

5.1 Archaeological Records Search

BFSA requested a records search from the SCIC at SDSU for an area of one mile surrounding the project in order to determine the presence of any previously recorded archaeological sites. The complete results of the records search are provided in Appendix B and discussed in Section 6.1. The SCIC search also included a standard review of the National Register of Historic Places (NRHP) and the OHP Built Environment Resources Directory (BERD). Land patent records, held by the Bureau of Land Management (BLM) and accessible through the BLM General Land Office website, were also reviewed for pertinent project information. In addition, the BFSA research library was consulted for any relevant historical information.

5.2 Native American Consultation

A SLF search was requested from the NAHC to list potentially sacred or ceremonial sites or landforms on or near the project (Appendix C). The SLF search returned positive results and the NAHC requested that the San Luis Rey Band of Mission Indians be contacted for more information. BFSA reached out to the San Luis Rey Band and Cami Mojado participated in the archaeological survey of the Cypress Point Project on September 14, 2020. At that time, Ms. Mojado expressed concerns about the project due to its location along the southern bank of the San Luis Rey River, which is traditionally known to the Native peoples of the region as *Quechla* (Dutschke 2004). Prehistorically, *Quechla*, which generally refers to the San Luis Rey River watershed and the people who lived there, was a valuable water source for the native inhabitants of the region and to this day, provides water to five southern Native American tribes that live on or near its banks, including the Rincon, La Jolla, Pauma, Pala, and San Pasqual bands (Dutschke 2004). Due to the project's immediate proximity to *Quechla*, Ms. Mojado noted the potential for buried cultural deposits along the floodplain and expressed interest in a trenching program to examine areas in the project for any buried cultural resources that may be present. The trenching program was subsequently conducted on October 14, 2020 with participation by Banning Taylor from the San Luis Rey Band of Mission Indians.

5.3 Field Methodology

The methodology employed as part of the Phase I and II cultural resources study followed standard archaeological field procedures and was sufficient to accomplish a thorough assessment of the project. Based upon the Phase I survey results, potential for both historic and prehistoric deposits across the property was investigated through the implementation of a Phase II trench sampling program. The subject property has been previously disturbed and it is recognized that there is a possibility that any prehistoric or historic occupation deposits within the project could have resulted from previous land development on adjacent parcels, within the parcel, or as a result of secondary deposition from historic flooding episodes along the San Luis Rey River.

5.3.1 Field Survey

BFSA Senior Archaeologist Tracy A. Stropes, M.A., RPA conducted the survey of the Cypress Point Project on September 14, 2020 under the direction of Principal Investigator Brian F. Smith. Parallel survey transects spaced at approximately 10-meter intervals were utilized throughout the entire project and photographs were taken to document project conditions (see Section 6.2). The topography of the project was noted as generally flat. In general, the subject property has been impacted by grading and the construction of two man-made drainage trenches and three dirt walking trails.

5.3.2 Subsurface Testing

The testing program provided information to determine the presence or absence of subsurface deposits, assess deposit significance, and evaluate potential impacts to those resources. Because the property has been previously disturbed, the test trenches were placed across the project to identify the possibility of buried deposits across the entire parcel. The protocol for the implementation of the trench sampling program includes the following procedures:

- Any surface artifacts (historic and prehistoric) or concentrations of shell within the property were mapped and recorded. The identification of surface artifacts during the Phase I survey program was the basis for the Phase II testing program. All of the mapping to be conducted was accomplished using Global Positioning System units and data applicable to the project base maps.
- The field investigation included the excavation of 13 trenches within the project. Each trench measured approximately 150 centimeters in length and 45 centimeters in width, and each was excavated to approximately 150 centimeters in depth. Overall, the trenches served to identify the limits of any subsurface archaeological deposits within the property. Soil profiles and notes were completed for the excavations.
- Soils from the excavations were sifted through a one-eighth-inch mechanical screens to recover artifacts, which were then collected to characterize the sample. The quantity of soil sampled was dependent upon factors of artifact density, disturbance, cobbles

and fill, and depth.

- All cultural materials recovered from archaeological deposits were returned to BFSA laboratories for cleaning, cataloging, and analysis. Only a small quantity of prehistoric shell and one prehistoric ceramic fragment were collected.
- All information gathered from the field, laboratory analysis, and research has been incorporated into this technical report following CEQA guidelines and requirements.
- During all field studies conducted for the project, a representative from the San Luis Rey Band of Mission Indians volunteered to be on-site to participate in and monitor the archeological program.

5.4 Laboratory Analysis

Laboratory analysis of any prehistoric or historic material collected during the testing program will be initiated by taking an inventory of the collection. The collection will then be subjected to wet screening to remove as much of the dirt as possible from the artifacts. This process will help to facilitate the laboratory sorting and cataloging process.

5.4.1 Artifact Sorting and Analysis

The sorting technique will include the sorting, identification, and cataloging of all materials returned to the BFSA laboratory. Bulk items such as fragments of concrete, slag, and nondescript glass and metal will be weighed and cataloged en masse, by material type, for each level. All remaining artifacts will be separated by class and type and then identified to the most specific level possible. The artifacts will be sorted and cataloged, including totals, materials, condition, weight, provenience, and unique artifact identification numbers.

If prehistoric lithic artifacts are recovered from the project, they will be subjected to in-house analysis that will include recordation of lithic material, critical measurements and weight, and inspection for evidence of use wear, retouch, patination, or stains. The recovered flakes will be subjected to technologically-based lithic studies.

Non-lithic materials, such as ecofacts (shell, bone, or wood), will be subjected to specialized analyses. The laboratory analysis of the column samples will include flotation procedures to remove seeds and other microfaunal remains from the soil, followed by screening the remainder through a one-sixteenth-inch mesh sieve. The recovered materials, such as animal bone, fish bone, seeds, and charred plant remains, will be sorted and subjected to further analysis by the appropriate personnel. Other specialized studies, which will be conducted if the appropriate materials are encountered, include marine shell species identification, faunal analysis, otolith analysis (for seasonality), radiocarbon dating, obsidian sourcing and hydration, and blood residue and phytolith studies.

5.5 Provisions for the Discovery of Human Remains

If human remains are encountered, State Health and Safety Code Section 7050.5 states that no further disturbance shall occur until the county medical examiner has made a determination of origin and disposition pursuant to Public Resources Code Section 5097.98. The medical examiner must be notified of the find immediately. If the remains are determined to be prehistoric, the medical examiner would notify the NAHC, who would determine and notify a Most Likely Descendant (MLD). With the permission of the landowner or his/her authorized representative, the MLD may inspect the site of the discovery. The MLD shall complete the inspection within 24 hours of notification by the NAHC and may recommend scientific removal and nondestructive analysis of human remains and items associated with Native American burials. Adherence to State Health and Safety Code Section 7050.5 would occur as a matter of course and would ensure that impacts are less than significant.

5.6 Recordation and Curation

Any cultural resources identified as part of the Phase I and II cultural resources study will be recorded on the appropriate Department of Parks and Recreation (DPR) site record forms and submitted to the SCIC at SDSU. After cataloging, identification, and analysis, each cataloged entry will be marked with the appropriate provenience and catalog information. The collection will be prepared for permanent storage in compliance with the standards promoted by state and federal museum guidelines. If any cultural materials are recovered, the prehistoric and/or historic cultural materials recovered from those excavations will be curated at an appropriate curation facility. Upon approval from the City, the transfer of the collection will be executed. Copies of all data and the final report will be included with the curated artifact collection. All notes, photographs, and documents associated with the project will be housed at the office of BFSFA in Poway, California.

5.7 Applicable Regulations

Resource importance is assigned to districts, sites, buildings, structures, and objects that possess exceptional value or quality illustrating or interpreting the heritage of Oceanside in history, architecture, archaeology, engineering, and culture. Specifically, criteria outlined in CEQA provide the guidance for making such a determination. The following sections detail the criteria that a resource must meet in order to be determined important.

5.7.1 California Environmental Quality Act

According to CEQA, (§15064.5a), the term “historical resource” includes the following:

- 1) A resource listed in, or determined to be eligible by, the State Historical Resources Commission, for listing in the CRHR (Public Resources Code SS5024.1, Title 14 CCR, Section 4850 et seq.).

- 2) A resource included in a local register of historical resources, as defined in Section 5020.1(k) of the Public Resources Code or identified as significant in a historical resource survey meeting the requirements of Section 5024.1(g) of the Public Resources Code, shall be presumed to be historically or culturally significant. Public agencies must treat any such resource as significant unless the preponderance of evidence demonstrates that it is not historically or culturally significant.
- 3) Any object, building, structure, site, area, place, record, or manuscript, which a lead agency determines to be historically significant or significant in the architectural, engineering, scientific, economic, agricultural, educational, social, political, military, or cultural annals of California may be considered a historical resource, provided the lead agency's determination is supported by substantial evidence in light of the whole record. Generally, a resource shall be considered by the lead agency to be "historically significant" if the resource meets the criteria for listing on the CRHR (PRC SS5024.1, Title 14, Section 4852), including the following:
 - a) Is associated with events that have made a significant contribution to the broad patterns of California's history and cultural heritage;
 - b) Is associated with the lives of persons important in our past;
 - c) Embodies the distinctive characteristics of a type, period, region, or method of construction, or represents the work of an important creative individual, or possesses high artistic values; or
 - d) Has yielded, or may be likely to yield, information important in prehistory or history.
- 4) The fact that a resource is not listed in, or determined eligible for listing in, the CRHR, not included in a local register of historical resources (pursuant to Section 5020.1[k] of the Public Resources Code), or identified in a historical resources survey (meeting the criteria in Section 5024.1[g] of the Public Resources Code) does not preclude a lead agency from determining that the resource may be a historical resource as defined in Public Resources Code Section 5020.1(j) or 5024.1.

According to CEQA, Section 15064.5(b), a project with an effect that may cause a substantial adverse change in the significance of a historical resource is a project that may have a significant effect upon the environment. CEQA defines a substantial adverse change as:

- 1) Substantial adverse change in the significance of a historical resource means physical demolition, destruction, relocation, or alteration of the resource or its immediate surroundings such that the significance of a historical resource would be materially impaired.

- 2) The significance of a historical resource is materially impaired when a project:
 - a) Demolishes or materially alters in an adverse manner those physical characteristics of a historical resource that convey its historical significance and that justify its inclusion in, or eligibility for, inclusion in the CRHR; or
 - b) Demolishes or materially alters in an adverse manner those physical characteristics that account for its inclusion in a local register of historical resources pursuant to Section 5020.1(k) of the Public Resources Code or its identification in a historical resources survey meeting the requirements of Section 5024.1(g) of the Public Resources Code, unless the public agency reviewing the effects of the project establishes by a preponderance of evidence that the resource is not historically or culturally significant; or,
 - c) Demolishes or materially alters in an adverse manner those physical characteristics of a historical resource that convey its historical significance and that justify its eligibility for inclusion in the CRHR as determined by a lead agency for purposes of CEQA.

Section 15064.5(c) of CEQA applies to effects upon archaeological sites and contains the following additional provisions regarding archaeological sites:

1. When a project will impact an archaeological site, a lead agency shall first determine whether the site is a historical resource, as defined in subsection (a).
2. If a lead agency determines that the archaeological site is a historical resource, it shall refer to the provisions of Section 21084.1 of the Public Resources Code, Section 15126.4 of the guidelines, and the limits contained in Section 21083.2 of the Public Resources Code do not apply.
3. If an archaeological site does not meet the criteria defined in subsection (a) but does meet the definition of a unique archaeological resource in Section 21083.2 of the Public Resources Code, the site shall be treated in accordance with the provisions of Section 21083.2. The time and cost limitations described in Public Resources Code Section 21083.2(c-f) do not apply to surveys and site evaluation activities intended to determine whether the project location contains unique archaeological resources.
4. If an archaeological resource is neither a unique archaeological nor historical resource, the effects of the project upon those resources shall not be considered a significant effect upon the environment. It shall be sufficient that both the resource and the effect upon it are noted in the Initial Study or Environmental Impact Report, if one is prepared to address impacts upon other resources, but they need not be considered further in the CEQA process.

Sections 15064.5(d) and (e) contain additional provisions regarding human remains. Regarding Native American human remains, paragraph (d) provides:

(d) When an Initial Study identifies the existence of, or the probable likelihood of, Native American human remains within the project, the lead agency shall work with the appropriate Native Americans as identified by the NAHC, as provided in Public Resources Code SS5097.98. The applicant may develop an agreement for treating or disposing of, with appropriate dignity, the human remains and any items associated with Native American burials with the appropriate Native Americans as identified by the NAHC. Action implementing such an agreement is exempt from:

- 1) The general prohibition on disinterring, disturbing, or removing human remains from any location other than a dedicated cemetery (Health and Safety Code Section 7050.5).
- 2) The requirements of CEQA and the Coastal Act.

6.0 RESULTS

6.1 Records Search Results

An archaeological records search for the project and the surrounding area within a one-mile radius was conducted by BFSa at the SCIC at SDSU (Appendix B). The search results identified 21 cultural resources within one mile of the project, none of which are within the property boundaries (Table 5.1–1). Of the previously recorded resources, nine are prehistoric, eight are historic, and four are a multicomponent. The prehistoric sites include seven lithic and shell scatters, one bedrock milling feature site, and one shell isolate. The historic resources include Mission San Luis Rey de Francia, adobe ruins and adobe ruins with historic refuse or a cistern, a historic ranch complex, El Camino Real, a historic refuse scatter, and the San Luis Rey Wastewater Treatment Plant. The multicomponent sites include prehistoric occupation sites with historic refuse deposits and a historic ranch complex with a prehistoric shell and fire-affected rock scatter.

Table 6.1–1
Previously Recorded Archaeological Sites
Within a One-Mile Radius of the Project

Site Number(s)	Site Description
SDI-1246, SDI-5132, SDI-5460, SDI-5461, SDI-6010, SDI-10,080, and SDI-11,468	Prehistoric lithic and shell scatter
SDI-11,469	Bedrock milling features
P-37-036355	Prehistoric shell isolate
SDI-241	Mission San Luis Rey de Francia
SDI-14,410	Historic ranch complex
SDI-14,006H	Historic route of El Camino Real
SDI-5131	Historic adobe ruins with a historic refuse scatter
SDI-10,078H	Historic adobe ruins with a Spanish tile-lined cistern
SDI-10,079H	Historic adobe ruins
SDI-16,795	Historic refuse scatter
P-37-037110	San Luis Rey Wastewater Treatment Plant
SDI-5130, SDI-5133/H, and SDI-6009	Prehistoric occupation site with a historic refuse scatter
SDI-11,470/H	Historic ranch complex with a prehistoric shell and fire-affected rock scatter

The results of the SCIC records search also indicate that 101 archaeological investigations have been conducted within a one-mile radius of the subject property, six of which included portions of the subject property (Table 6.1–2).

Table 6.1–2

Archaeological Studies Conducted Within Portions of the Project

Carrico, Richard

- 1990 Letter Report for the Whelan Lake Emergency Access Road Alternative in the North Oceanside Annexation Area. ERCE. Unpublished report on file at the South Coastal Information Center at San Diego State University, San Diego, California.

Carrico, Richard L. and R.L. Franklin

- 1979 Cultural Resource Test Sampling Program for a Proposed Flood Control Project in the Lower San Luis Rey River Drainage, Oceanside, CA. Westec Services, Inc. Unpublished report on file at the South Coastal Information Center at San Diego State University, San Diego, California.

Carrillo, Charles

- 1982 Map for Highway Alternatives Study (11-SD-76 0.0129 11821-159021). CALTRANS. Unpublished report on file at the South Coastal Information Center at San Diego State University, San Diego, California.

Franklin, Randy and Richard L. Carrico

- 1978 A Preliminary Archaeological Reconnaissance for a Proposed Flood Control Project in the Lower San Luis Rey River Drainage. Westec Services, Inc. Unpublished report on file at the South Coastal Information Center at San Diego State University, San Diego, California.

New Horizons Planning Consultants, Inc.

- 1987 Draft Environmental Impact Report for the Whelan Ranch Sand Removal Project, Oceanside, CA. Unpublished report on file at the South Coastal Information Center at San Diego State University, San Diego, California.

Wade, Sue A. and Susan M. Hector

- 1989 A Cultural Resource Survey of the Loma Alta Creek Improvement Plan Area. RECON. Unpublished report on file at the South Coastal Information Center at San Diego State University, San Diego, California.

The SCIC also reviewed a historic structures database, which indicates that six historic addresses are located within a one-mile radius of the project. These structures include Rancho Francisco Pico (Whelan Ranch, 3850 North River Road), Jones Ranch (three structures at 3907 Mission Avenue), All Saints Church (3010 Peyri Drive), and the Blade-Tribune Building (the Libby School, 2020 Peyri Drive). Additionally, the following historic resources were also

consulted, which did not indicate the presence of any additional resources within the project boundaries:

- The NRHP index
- The OHP Archaeological Determinations of Eligibility
- The OHP BERD
- 1893 *Oceanside* topographic map (1:62,500 scale)
- 1901 *San Luis Rey* topographic map (1:125,000 scale)
- 1942 *Oceanside* topographic map (1:62,500 scale)
- 1948 *San Luis Rey* topographic map (7.5-minute)
- 1968 *San Luis Rey* topographic map (7.5-minute)

Lastly, a SLF search was requested from the NAHC to list potentially sacred or ceremonial sites or landforms on or near the project (Appendix C). The SLF search returned positive results and the NAHC requested that the San Luis Rey Band of Mission Indians be contacted for more information. BFSA reached out to the San Luis Rey Band and Cami Mojado participated in the archaeological survey of the Cypress Point Project on September 14, 2020. At that time, Ms. Mojado expressed concerns about the project due to its location along the southern bank of the San Luis Rey River, which is traditionally known to the Native peoples of the region as *Quechla* (Dutschke 2004). Prehistorically, *Quechla*, which generally refers to the San Luis Rey River watershed and the people who lived there, was a valuable water source for the native inhabitants of the region and to this day, provides water to five southern Native American tribes that live on or near its banks, including the Rincon, La Jolla, Pauma, Pala, and San Pasqual bands (Dutschke 2004). Due to the project's immediate proximity to *Quechla*, Ms. Mojado noted the potential for buried cultural deposits along the floodplain and expressed interest in a trenching program to examine areas in the project for any buried cultural resources that may be present. The trenching program was subsequently conducted on October 14, 2020 with participation by Banning Taylor from the San Luis Rey Band of Mission Indians.

6.2 Results of the Field Survey

The Phase I archaeological survey was completed on September 14, 2020 by Senior Archaeologist Tracy A. Stropes, M.A., RPA with participation by Cami Mojado from the San Luis Rey Band of Mission Indians. Aerial photographs, maps, and a mobile Trimble Global Positioning System unit permitted orientation and location of the project boundaries. The entire 7.38-acre property was surveyed employing 10-meter spaced transects. The surface of the property, including all exposed ground surfaces, rodent burrows, and disturbed areas, was carefully inspected. A survey form, field notes, and photographs documented the survey work undertaken.

The topography of the project was noted as generally flat and previously graded (Plate 6.2–1). Including the previous grading of the property, noted disturbances include two man-made trenches and three dirt walking paths. The trenches, located at the north and south of the property, are a result of drainage pipelines between the neighboring residential development and the San Luis Rey River channel. The southernmost trench runs east to west along the southern project boundary and the northernmost trench runs southeast to northwest across the northern third of the project (Plate 6.2–2). The three dirt walking paths are located along the southern project boundary, running east to west through the center of the project, and running northeast to southwest along the northern third of the property (Plate 6.2–3). A majority of the property, with the exclusion of the dirt walking paths, was covered in dense, low-lying grasses, rendering ground visibility to be generally poor. Based upon archival research and aerial photographs, the property was heavily modified between 1953 and 2004 for agricultural use and surrounding housing developments. However, since that time, little additional development has taken place. No evidence of structures or other features is present within the available historical documentation for the parcel.



Plate 6.2–1: Overview of the project, facing northwest.



Plate 6.2–2: Overview of the northernmost drainage trench, facing northeast.



Plate 6.2–3: Overview of one of the walking paths, facing northwest.

Despite the poor ground visibility during the survey, an unconsolidated scatter of prehistoric shell was identified in the northern quarter of the project. The marine shell was observed within previously impacted soil brought up to the surface by the development of a drainage ditch that runs northwest to southeast across the northern portion of the parcel (Plate 6.2–4). The shell scatter was identified as fragments of *Ostrea* sp., *Chione* sp., and *Donax* sp. (Plates 6.2–5 and 6.2–6), with the greatest concentration measuring 15 meters north to south by seven meters east to west. Additional shell fragments were identified north of the shell scatter, but this is likely the result of previous disturbance to the site created by grading, which would have spread the shell scatter outward. The presence of the unconsolidated scatter of shell materials indicated a potential for subsurface deposits to also be present.



Plate 6.2–4: Overview of the unconsolidated prehistoric shell scatter, facing southeast.



Plate 6.2-5: View of *Ostrea* sp. and *Chione* sp. shell identified during the survey.



Plate 6.2-6: View of *Donax* sp. shell identified during the survey.

6.3 Results of Significance Testing

Based upon the presence of cultural materials during the survey and the potential for subsurface deposits, a testing and significance evaluation program was conducted on October 14, 2020. BFSAs archaeologists Clarence Hoff and James Shrieve conducted the subsurface investigations with participation by Banning Taylor from the San Luis Rey Band of Mission Indians. The test program included the mechanical excavation of 13 test trenches across the project (Figure 6.3–1). The test trenches measured approximately 150 centimeters in length and 45 centimeters in width, and each was excavated to approximately 150 centimeters in depth. All removed soils were mechanically screened through one-eighth-inch mesh hardware cloth.

Of the 13 trenches excavated, six (Trenches 2, 5, 6, 8, 9, and 10) produced only 20 fragments of marine shell (21.2 grams identified as *Argopecten* sp., *Chione* sp., *Ostrea* sp., and *Donax* sp.) and one piece of prehistoric ceramic (Table 6.3–1). The majority of the materials were recovered between zero and 60 centimeters in depth, which corresponds to the stratigraphic observations for the trenches across the property. It is clear that the majority of the artifacts identified were concentrated between the 30- and 60-centimeter levels. However, no midden soils were encountered.

The subsurface artifact concentration represents a semi-compacted, sandy loam with



Plate 6.3–1: East wall profile of Trench 3.

minimal artifact recovery that has been impacted by development over time and mixed across the property. This impacted, brown (10YR 5/3), sandy loam deposit extends for almost 100 centimeters ranging from zero to 100 centimeters in depth. This horizon contained the majority of the cultural materials. The second horizon, which was observed between the 90- and 150-centimeter levels, represents a fine-grained, reddish brown (5YR 5/4),

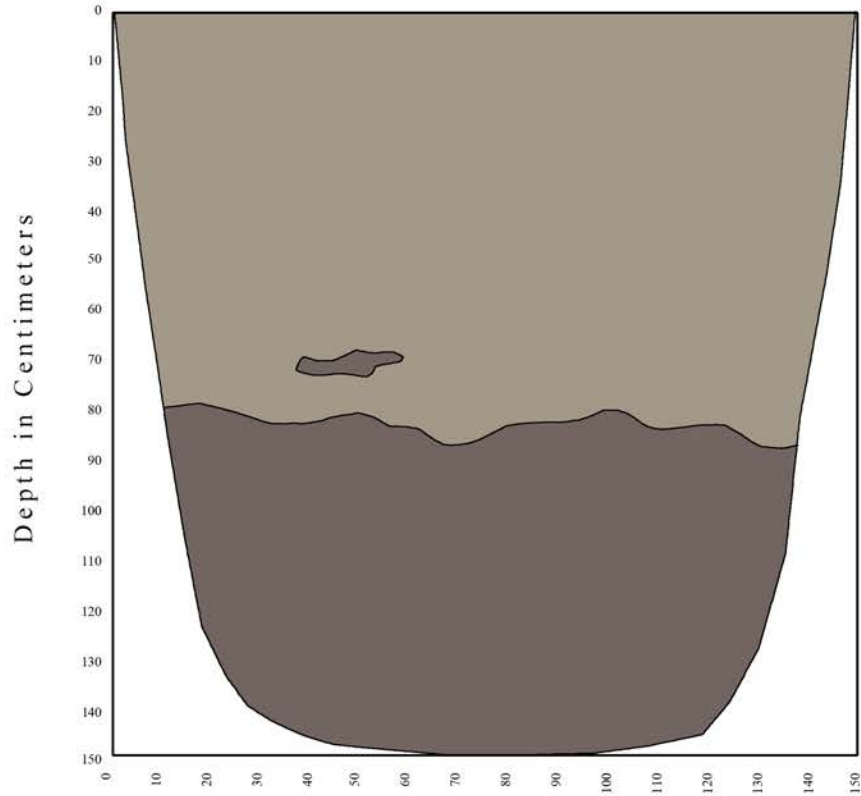
mixed, silty soil that was largely sterile. The east wall soil profile of Trench 3 is presented in Figure 6.3–2 and Plate 6.3–1.

Figure 6.3-1
Excavation Location Map

(Deleted for Public Review; Bound Separately)

Table 6.3-1
Trench Excavation Data
The Cypress Point Project

Trench	Depth (cm)	Object	Material	Quantity	Weight (g)
1	0-150	No Recovery			
2	0-60	Marine shell	<i>Ostrea</i> sp.	3	2.0
	60-150	No Recovery			
3	0-150	No Recovery			
4	0-150	No Recovery			
5	0-30	No Recovery			
	30-60	Marine shell	<i>Chione</i> sp.	10	15.3
			<i>Ostrea</i> sp.		
			<i>Donax</i> sp.		
60-150	No Recovery				
6	0-30	No Recovery			
	30-60	Marine shell	Indeterminate	1	0.2
	60-150	No Recovery			
7	0-150	No Recovery			
8	0-30	Marine shell	<i>Donax</i> sp.	2	0.5
	30-150	No Recovery			
9	0-30	No Recovery			
	30-60	Marine shell	<i>Chione</i> sp.	1	1.7
		Prehistoric ceramic	-	1	4.1
60-150	No Recovery				
10	0-60	Marine shell	<i>Argopecten</i> sp.	3	1.5
	60-150	No Recovery			
11	0-150	No Recovery			
12	0-150	No Recovery			
13	0-150	No Recovery			
Total				21	25.3



Legend


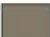
-  10YR 5/3, moderately compact, brown, sandy loam
-  5YR 5/4, compact, reddish-brown, silty sand



Figure 6.3–2
East Wall Profile of Trench 3
The Cypress Point Project

6.4 Discussion

The previous disturbance within the subject property appears to be the cause for the presence of marginal traces of marine shell within the Cypress Point Project. The Phase I and II cultural resources study did not result in the observation of any significant artifact concentrations, cultural deposits, or other features related to the prehistoric or historic use within the project boundaries. No midden soils or significant cultural resources were observed during the testing.

The artifacts recovered from the Cypress Point Project constitute too small of a collection for broad research questions to be applied. Furthermore, the materials observed in the trenches are interpreted as potentially being a secondary deposition that resulted from historic flooding episodes along the San Luis Rey River. This limited deposition has also been heavily modified by the historic development of the property as early as 1953. Such disturbance has removed any *in situ* provenience information from the collection and, as such, these materials represent only minimum research value and are not considered to be indicative of a significant prehistoric deposit. The current testing program has exhausted any research potential that the deposit may have contained, and therefore, it is not considered significant, does not qualify as a Historical Resource, and is not eligible for designation on the CRHR in accordance with CEQA.

7.0 RECOMMENDATIONS

The Phase I and II cultural resources study for the Cypress Point Project was conducted in conformance with Section 21083.2 of the California Public Resources Code and CEQA. The survey and archaeological testing program for the Cypress Point Project resulted in the identification of a diffuse and disturbed prehistoric shell scatter. All of the materials are likely related to the general prehistoric occupation of the San Luis Rey River region known to the San Luis Rey Band of Mission Indians as *Quechla*. Given the small quantity of artifacts dispersed across the project and the information generated by the testing program, the evaluation was reached that the project does not appear to contain any potentially significant cultural features or deposits. Based upon the documentation of only a sparse prehistoric shell deposit across the property, the proposed development would not result in adverse impacts to significant cultural resources, as defined in the California Code of Regulations, Section 15064.5.

Due to the results of the archaeological testing and significance evaluation, and the presence of a limited shell scatter, the potential exists to discover additional prehistoric deposits on the property. Although the trench results revealed that the property has been highly disturbed and it is unlikely that the any intact deposits remain, the potential exists that grading of the project could encounter historic and/or prehistoric artifacts and deposits not encountered during testing. Therefore, monitoring during ground-disturbing activities, such as grading or trenching, by a qualified archaeologist and Native American representative is recommended to ensure that if buried features (*i.e.*, human remains, hearths, or cultural deposits) are present, they will be handled in a timely and proper manner. The scope of the monitoring program is provided below.

Mitigation Monitoring and Reporting Program

A Mitigation Monitoring and Reporting Program to mitigate potential impacts to undiscovered buried cultural resources within the Cypress Point Project shall be implemented to the satisfaction of the lead agency. This program shall include, but not be limited to, the following actions:

- 1) Prior to issuance of a grading permit, the applicant shall provide written verification in the form of a letter from the project archaeologist to the lead agency stating that a certified archaeologist has been retained to implement the monitoring program.
- 2) The project applicant shall provide Native American monitoring during grading. The Native American monitor shall work in concert with the archaeological monitor to observe ground disturbances and search for cultural materials.
- 3) The certified archaeologist shall attend the pre-grading meeting with the contractors to explain and coordinate the requirements of the monitoring program.

- 4) During the original cutting of previously undisturbed deposits, the archaeological monitor(s) and tribal representative shall be on-site, as determined by the consulting archaeologist, to perform periodic inspections of the excavations. The frequency of inspections will depend upon the rate of excavation, the materials excavated, and the presence and abundance of artifacts and features. The consulting archaeologist shall have the authority to modify the monitoring program if the potential for cultural resources appears to be less than anticipated.
- 5) Isolates and clearly non-significant deposits will be minimally documented in the field so the monitored grading can proceed.
- 6) In the event that previously unidentified cultural resources are discovered, the archaeologist shall have the authority to divert or temporarily halt ground disturbance operation in the area of discovery to allow for the evaluation of potentially significant cultural resources. The archaeologist shall contact the lead agency at the time of discovery. The archaeologist, in consultation with the lead agency, shall determine the significance of the discovered resources. The lead agency must concur with the evaluation before construction activities will be allowed to resume in the affected area. For significant cultural resources, a Research Design and Data Recovery Program to mitigate impacts shall be prepared by the consulting archaeologist and approved by the lead agency before being carried out using professional archaeological methods. If any human bones are discovered, the county coroner and lead agency shall be contacted. In the event that the remains are determined to be of Native American origin, the MLD, as identified by the NAHC, shall be contacted in order to determine proper treatment and disposition of the remains.
- 7) Before construction activities are allowed to resume in the affected area, the artifacts shall be recovered and features recorded using professional archaeological methods. The project archaeologist shall determine the amount of material to be recovered for an adequate artifact sample for analysis.
- 8) All cultural material collected during the grading monitoring program shall be processed and curated according to the current professional repository standards. The collections and associated records shall be transferred, including title, to an appropriate curation facility, to be accompanied by payment of the fees necessary for permanent curation.
- 9) A report documenting the field and analysis results and interpreting the artifact and research data within the research context shall be completed and submitted to the satisfaction of the lead agency prior to the issuance of any building permits. The report will include DPR Primary and Archaeological Site Forms.

8.0 CERTIFICATION

I hereby certify that the statements furnished above and in the attached exhibits present the data and information required for this archaeological report, and that the facts, statements, and information presented are true and correct to the best of my knowledge and belief, and have been compiled in accordance with CEQA criteria as defined in Section 15064.5 and City of Oceanside cultural resource criteria.



Brian F. Smith
Principal Investigator

October 27, 2020

Date

9.0 REFERENCES CITED

Bada, Jeffrey L., Roy A. Schroeder, and George F. Carter

- 1974 New Evidence for the Antiquity of Man in America Deduced from Aspartic Acid Racemization. *Science* 184:791–793.

Bancroft, Hubert Howe

- 1886 *History of California* (Volume V; 1846-1848). The History Company, San Francisco, California.

Beauchamp, R. Mitchel

- 1986 *A Flora of San Diego County, California*. Sweetwater River Press, National City, California.

Blick, J.D.

- 1976 Agriculture in San Diego County. In *San Diego – An Introduction to the Area*. Edited by Philip Pryde. Kendall/Hunt Publishing Company, Dubuque, Iowa.

Bull, C.

- 1983 Shaking the Foundations: The Evidence for San Diego Prehistory. In *Cultural Resource Management Casual Papers* 1(3):15–64. Department of Anthropology, San Diego State University.

- 1987 A New Proposal: Some Suggestions for San Diego Prehistory. In *San Dieguito-La Jolla: Chronology and Controversy*, edited by Dennis Gallegos, pp. 35–42. San Diego County Archaeological Society Research Paper No. 1.

Cardenas, D. Sean

- 1986 Avocado Highlands: An Inland Late La Jolla and Preceramic Yuman Site from Southern San Diego County. In *Cultural Resource Management Casual Paper* 2(2). Department of Anthropology, San Diego State University.

Carrico, Richard

- 1990 Letter Report for the Whelan Lake Emergency Access Road Alternative in the North Oceanside Annexation Area. ERCE. Unpublished report on file at the South Coastal Information Center at San Diego State University, San Diego, California.

Carrico, Richard L. and R.L. Franklin

- 1979 Cultural Resource Test Sampling Program for a Proposed Flood Control Project in the Lower San Luis Rey River Drainage, Oceanside, CA. Westec Services, Inc. Unpublished report on file at the South Coastal Information Center at San Diego State University, San Diego, California.

Carrico, Richard L. and Clifford V.F. Taylor

- 1983 Excavation of a Portion of Ystagua: A Coastal Valley Ipai Settlement. Unpublished report on file at the City of San Diego Planning Department, Environmental Quality Division, San Diego, California.

Carrillo, Charles

- 1982 Map for Highway Alternatives Study (11-SD-76 0.0129 11821-159021). CALTRANS. Unpublished report on file at the South Coastal Information Center at San Diego State University, San Diego, California.

Carter, George F.

- 1957 *Pleistocene Man at San Diego*. Johns Hopkins Press, Baltimore.
- 1980 *Earlier than You Think: A Personal View of Man in America*. Texas A&M University Press, College Station.

Caughey, John W.

- 1970 *California: A Remarkable State's Life History (Third Edition)*. Prentice-Hall, Englewood Cliffs, New Jersey.

Chapman, Charles E.

- 1921 *A History of California: The Spanish Period*. The Macmillan Company, New York.

City of Oceanside

- 2020 History. Electronic document, <https://www.ci.oceanside.ca.us/about/history.asp>, accessed September 21, 2020.

Crouch, Herbert

- 1915 Reminiscences, 1868-1915. Unpublished manuscript, California Room, San Diego Public Library; and SDHS Library, Serra Museum.

Davis, E.L., C.W. Brott, and D.L. Weide

- 1969 The Western Lithic Co-Tradition. *San Diego Museum Papers* (6). San Diego Museum of Man, San Diego.

Deméré, Thomas A. and Stephen L. Walsh

- 1993 Paleontological Resources, County of San Diego. Department of Paleontology, San Diego Natural History Museum.

Dutschke, Dwight

- 2004 A History of American Indians in California. In *Five Views*. California Department of Parks and Recreation, Office of Historic Preservation, editor.

Elliott, Wallace W.

- 1883 *History of San Bernardino and San Diego Counties (1965 Edition)*. Riverside Museum Press, Riverside, California.

Engelhardt, Zephyrn

- 1920 *San Diego Mission*. James M. Barry Company, San Francisco.

Ezell, Paul H.

- 1983 A New Look at the San Dieguito Culture. *Cultural Resource Management Casual Papers* 1(3):103–109. Department of Anthropology, San Diego State University, San Diego.

- 1987 The Harris Site – An Atypical San Dieguito Site, or am I Beating a Dead Horse? In *San Dieguito-La Jolla: Chronology and Controversy*, edited by Dennis Gallegos, pp. 15–22. San Diego County Archaeological Society Research Paper No. 1.

Franklin, Randy and Richard L. Carrico

- 1978 A Preliminary Archaeological Reconnaissance for a Proposed Flood Control Project in the Lower San Luis Rey River Drainage. Westec Services, Inc. Unpublished report on file at the South Coastal Information Center at San Diego State University, San Diego, California.

Gallegos, Dennis R.

- 1987 A Review and Synthesis of Environmental and Cultural Material for the Batiquitos Lagoon Region. In *San Dieguito-La Jolla: Chronology and Controversy*, edited by D. Gallegos. San Diego County Archaeological Society Research Paper 1:23–34.

Gallegos, Dennis R. and Carolyn E. Kyle

- 1988 Five Thousand Years of Maritime Subsistence at Ballast Point Prehistoric Site SDI-48 (W-164) San Diego, California. Unpublished report on file at the South Coastal Information Center at San Diego State University, San Diego, California.

Gordinier, Jerry G.

- 1966 *Problems of Settlement in the San Diego Foothills*. Thesis, San Diego State College, San Diego.

Hawthorne, Kristi

- 2015 Oceanside Chamber Blog: History of Oceanside 1888-1912. Electronic document, <https://www.oceansidechamber.com/oceanside-blog/history-of-oceanside-1888-1912>, accessed September 21, 2020.

Heiges, Harvey

- 1976 The Economic Base of San Diego County. In *San Diego – An Introduction to the Region*. Edited by Philip Pryde. Kendall/Hunt Publishing Company, Dubuque, Iowa.

King, Chester DeWitt

- 1982 *The Evolution of Chumash Society: A Comparative Study of Artifacts Used for Social System Maintenance in the Santa Barbara Channel Region Before AD 1804*. Ph.D. dissertation, Department of Anthropology, University of California, Davis.

Kyle, Carolyn, Adella Schroth, and Dennis R. Gallegos

- 1990 Early Period Occupation at the Kuebler Ranch Site SDI-8,654 Otay Mesa, San Diego County, California. Prepared for and on file at the County of San Diego, Department of Public Works by ERCE Environmental and Energy Services Co., San Diego, California.

Minshall, Herbert L.

- 1976 *The Broken Stones*. Copley Books, San Diego.
- 1989 *Buchanan Canyon: Ancient Human Presence in the Americas*. Slawson Communications, San Marcos, California.

Moratto, Michael J.

- 1984 *California Archaeology*. Academic Press, New York.

Moriarty, James R., III

- 1966 Culture Phase Divisions Suggested by Topological Change Coordinated with Stratigraphically Controlled Radiocarbon Dating in San Diego. *Anthropological Journal of Canada* 4(4):20–30.
- 1967 Transitional Pre-Desert Phase in San Diego, California. *Science* 155(3762):553–336. Scripps Institution – UCSD Contribution No. 2278.
- 1969 San Dieguito Complex: Suggested Environmental and Cultural Relationships. *Anthropological Journal of Canada* 7(3):2–18.

Moriarty, James R., III and Herbert L. Minshall

- 1972 A New Pre-Desert Site Discovered near Texas Street. *Anthropological Journal of Canada* 10(3):10–13.

Moyer, Cecil C.

- 1969 *Historic Ranchos of San Diego*. Edited by Richard F. Pourade. Union-Tribune Publishing Company, San Diego.

New Horizons Planning Consultants, Inc.

- 1987 Draft Environmental Impact Report for the Whelan Ranch Sand Removal Project, Oceanside, CA. Unpublished report on file at the South Coastal Information Center at San Diego State University, San Diego, California.

Norris, R.M. and R.W. Webb

1990 *Geology of California* (second edition). John Wiley and Sons, Inc., New York, New York.

Office of Historic Preservation (OHP)

1990 Archaeological Resource Management Reports: Recommended Contents and Format. Department of Parks and Recreation, Sacramento, California.

Palou, Fray Francisco

1926 *Historical Memoirs of New California*. Edited by Herbert Eugene Bolton (4 Volumes). University of California Press, Berkeley.

Pitt, Leonard

1966 *The Decline of the Californios*. University of California Press, Los Angeles.

Pourade, Richard F.

1967 *The Rising Tide: Southern California in the Twenties and Thirties*. Union-Tribune Publishing Company, San Diego.

Price, Glenn W.

1967 *Origins of the War with Mexico*. University of Texas Press, Austin.

Raven-Jennings, Shelly and Brian F. Smith

1999a Final Report for Site SDI-8330/W-240 "Scraper Hill," Escondido, California. Unpublished report on file at the South Coastal Information Center at San Diego State University, San Diego, California.

1999b Report of Excavations at CA-SDI-4608: Subsistence and Technology Transitions during the Mid-to-Late Holocene in San Diego County (Scripps Poway Parkway). Unpublished report on file at the South Coastal Information Center at San Diego State University, San Diego, California.

Reeves, Brian O.K.

1985 Early Man in the Americas: Who, When, and Why. In *Woman, Poet, Scientist: Essays in New World Anthropology Honoring Dr. Emma Louise Davis*, edited by Thomas C. Blackburn, pp. 79–104. Ballena Press Anthropological Papers No. 29. Los Altos, California.

Reeves, Brian, John M.D. Pohl, and Jason W. Smith.

1986 The Mission Ridge Site and the Texas Street Question. In *New Evidence for the Pleistocene Peopling of the Americas*, edited by Alan Lyle Bryan, pp. 65–80. Center for the Study of Early Man, University of Maine, Orono.

Robinson, W.W.

1948 *Land in California*. University of California Press, Berkeley.

Robbins-Wade, Mary Judith

1990 *Prehistoric Settlement Pattern of Otay Mesa San Diego County, California*. Thesis, Department of Anthropology, San Diego State University.

Rogers, Malcolm

1966 *Ancient Hunters of the Far West*. Edited with contributions by H.M. Worthington, E.L. Davis, and Clark W. Brott. Union Tribune Publishing Company, San Diego.

Rolle, Andrew F.

1969 *California: A History (Second Edition)*. Thomas Y. Crowell Company, New York.

San Diego Union

1868 San Diego history. 6 February. San Diego, California.

1870 San Diego history. 23 June. San Diego, California.

1872 San Diego history. 2 January. San Diego, California.

Shipek, Florence

1977 *A Strategy for Change: The Luiseño of Southern California*. Dissertation on file at the University of Hawaii.

Shumway, George, Carl L. Hubbs, and James R. Moriarty, III

1961 Scripps Estate Site, San Diego, California: A La Jolla Site Dated 5,460-7,370 Years Before the Present. *Annals of the New York Academy of Sciences* 93(3).

Smith, Brian F.

1996 The Results of a Cultural Resource Study at the 4S Ranch. Unpublished report on file at the South Coastal Information Center at San Diego State University, San Diego, California.

Smith, Brian F. and James R. Moriarty, III

1985a The Archaeological Excavations at Site W-20, Sierra Del Mar. Unpublished report on file at the South Coastal Information Center at San Diego State University, San Diego, California.

1985b The Archaeological Excavations at Batiquitos Pointe and Batiquitos Bluffs. Unpublished report on file at the City of Carlsbad, Carlsbad, California.

State Historic Preservation Office (SHPO)

1995 Instructions for Recording Historical Resources. Office of Historic Preservation,

Sacramento.

Stropes, Tracy A.

- 2007 *Nodule Industries of North Coastal San Diego: Understanding Change and Stasis in 10,000 Years of Lithic Technology*. Submitted to San Diego State University. Thesis on file at San Diego State University, San Diego, California.

True, Delbert L.

- 1958 An Early Complex in San Diego County, California. *American Antiquity* 23(3).
- 1966 *Archaeological Differentiation of the Shoshonean and Yuman Speaking Groups in Southern California*. Dissertation, University of California Los Angeles.
- 1970 Investigations of a Late Prehistoric Complex in Cuyamaca Rancho State Park, San Diego County, California. Archaeological Survey Monograph. University of California, Los Angeles.
- 1980 The Pauma Complex in Northern San Diego County: 1978. *Journal of New World Archaeology* 3(4):1–39.
- 1986 Molpa, a Late Prehistoric Site in Northern San Diego County: The San Luis Rey Complex, 1983. In *Symposium: A New Look at Some Old Sites*, edited by Gary S. Breschini and Trudy Haversat, pp. 29–36. Coyote Press, Salinas.

True, D.L. and Eleanor Beemer

- 1982 Two Milling Stone Inventories from Northern San Diego County, California. *Journal of California and Great Basin Anthropology* 4:233–261.

True, D.L. and R. Pankey

- 1985 Radiocarbon Dates for the Pauma Complex Component at the Pankey Site, Northern San Diego County, California. *Journal of California and Great Basin Anthropology* 7:240–244.

United States Department of Agriculture (USDA) Natural Resources Conservation Service (NRCS)

- 2019 Web Soil Survey Soil Map. Electronic document, <https://websoilsurvey.sc.egov.usda.gov/App/WebSoilSurvey.aspx>, accessed September 22, 2020.

Van Dyke, Theodore

- 1886 *Southern California*. Fords, Howard and Hulbert.

Wade, Sue A. and Susan M. Hector

- 1989 A Cultural Resource Survey of the Loma Alta Creek Improvement Plan Area. RECON. Unpublished report on file at the South Coastal Information Center at San Diego State

University, San Diego, California.

Warren, Claude N.

1964 *Cultural Change and Continuity on the San Diego Coast*. Dissertation on file at the University of California, Los Angeles.

1966 The San Dieguito Type Site: Malcolm J. Roger's 1938 Excavation on the San Dieguito River. *San Diego Museum Papers* (6).

Warren, Claude L., Gretchen Siegler, and Frank Dittmer

1998 Paleoindian and Early Archaic Periods, In Prehistoric and Historic Archaeology of Metropolitan San Diego: A Historical Properties Background Study (draft). Prepared for and on file at ASM Affiliates, Inc., San Diego, California.

Waugh, Georgie

1986 *Intensification and Land-use: Archaeological Indication of Transition and Transformation in a Late Prehistoric Complex in Southern California*. Dissertation, Department of Anthropology, University of California, Davis.

APPENDIX A

Resumes of Key Personnel

Brian F. Smith, MA

Owner, Principal Investigator

Brian F. Smith and Associates, Inc.
14010 Poway Road • Suite A •
Phone: (858) 679-8218 • Fax: (858) 679-9896 • E-Mail: bsmith@bfsa-ca.com



Education

Master of Arts, History, University of San Diego, California	1982
Bachelor of Arts, History, and Anthropology, University of San Diego, California	1975

Professional Memberships

Society for California Archaeology

Experience

Principal Investigator Brian F. Smith and Associates, Inc.	1977–Present Poway, California
---	-----------------------------------

Brian F. Smith is the owner and principal historical and archaeological consultant for Brian F. Smith and Associates. Over the past 32 years, he has conducted over 2,500 cultural resource studies in California, Arizona, Nevada, Montana, and Texas. These studies include every possible aspect of archaeology from literature searches and large-scale surveys to intensive data recovery excavations. Reports prepared by Mr. Smith have been submitted to all facets of local, state, and federal review agencies, including the US Army Corps of Engineers, the Bureau of Land Management, the Bureau of Reclamation, the Department of Defense, and the Department of Homeland Security. In addition, Mr. Smith has conducted studies for utility companies (Sempra Energy) and state highway departments (CalTrans).

Professional Accomplishments

These selected major professional accomplishments represent research efforts that have added significantly to the body of knowledge concerning the prehistoric life ways of cultures once present in the Southern California area and historic settlement since the late 18th century. Mr. Smith has been principal investigator on the following select projects, except where noted.

Downtown San Diego Mitigation and Monitoring Reporting Programs: Large numbers of downtown San Diego mitigation and monitoring projects, some of which included Broadway Block (2019), 915 Grape Street (2019), 1919 Pacific Highway (2018), Moxy Hotel (2018), Makers Quarter Block D (2017), Ballpark Village (2017), 460 16th Street (2017), Kettner and Ash (2017), Bayside Fire Station (2017), Pinnacle on the Park (2017), IDEA1 (2016), Blue Sky San Diego (2016), Pacific Gate (2016), Pendry Hotel (2015), Cisterra Sempra Office Tower (2014), 15th and Island (2014), Park and G (2014), Comm 22 (2014), 7th and F Street Parking (2013), Ariel Suites (2013), 13th and Marker (2012), Strata (2008), Hotel Indigo (2008), Lofts at 707 10th Avenue Project (2007), Breeza (2007), Bayside at the Embarcadero (2007), Aria (2007), Icon (2007), Vantage Pointe (2007), Aperture (2007), Sapphire Tower (2007), Lofts at 655 Sixth Avenue (2007), Metrowork (2007), The Legend (2006), The Mark (2006), Smart Corner (2006), Lofts at 677 7th Avenue (2005), Aloft on Cortez Hill (2005), Front and Beech Apartments (2003), Bella Via Condominiums (2003), Acqua Vista Residential Tower (2003), Northblock Lofts (2003), Westin Park Place Hotel (2001), Parkloft

Apartment Complex (2001), Renaissance Park (2001), and Laurel Bay Apartments (2001).

1900 and 1912 Spindrift Drive: An extensive data recovery and mitigation monitoring program at the Spindrift Site, an important prehistoric archaeological habitation site stretching across the La Jolla area. The project resulted in the discovery of over 20,000 artifacts and nearly 100,000 grams of bulk faunal remains and marine shell, indicating a substantial occupation area (2013-2014).

Emerald Acres: Archaeological survey and testing program of 14 archaeological sites across 333 acres in the Winchester area of Riverside County (2000-2018).

San Diego Airport Development Project: An extensive historic assessment of multiple buildings at the San Diego International Airport and included the preparation of Historic American Buildings Survey documentation to preserve significant elements of the airport prior to demolition (2017-2018).

Citracado Parkway Extension: A still-ongoing project in the city of Escondido to mitigate impacts to an important archaeological occupation site. Various archaeological studies have been conducted by BFSA resulting in the identification of a significant cultural deposit within the project area.

Westin Hotel and Timeshare (Grand Pacific Resorts): Data recovery and mitigation monitoring program in the city of Carlsbad consisted of the excavation of 176 one-square-meter archaeological data recovery units which produced thousands of prehistoric artifacts and ecofacts, and resulted in the preservation of a significant prehistoric habitation site. The artifacts recovered from the site presented important new data about the prehistory of the region and Native American occupation in the area (2017).

Citracado Business Park West: An archaeological survey and testing program at a significant prehistoric archaeological site and historic building assessment for a 17-acre project in the city of Escondido. The project resulted in the identification of 82 bedrock milling features, two previously recorded loci and two additional and distinct loci, and approximately 2,000 artifacts (2018).

The Everly Subdivision Project: Data recovery and mitigation monitoring program in the city of El Cajon resulted in the identification of a significant prehistoric occupation site from both the Late Prehistoric and Archaic Periods, as well as producing historic artifacts that correspond to the use of the property since 1886. The project produced an unprecedented quantity of artifacts in comparison to the area encompassed by the site, but lacked characteristics that typically reflect intense occupation, indicating that the site was used intensively for food processing (2014-2015).

Ballpark Village: A mitigation and monitoring program within three city blocks in the East Village area of San Diego resulting in the discovery of a significant historic deposit. Nearly 5,000 historic artifacts and over 500,000 grams of bulk historic building fragments, food waste, and other materials representing an occupation period between 1880 and 1917 were recovered (2015-2017).

Archaeology at the Padres Ballpark: Involved the analysis of historic resources within a seven-block area of the "East Village" area of San Diego, where occupation spanned a period from the 1870s to the 1940s. Over a period of two years, BFSA recovered over 200,000 artifacts and hundreds of pounds of metal, construction debris, unidentified broken glass, and wood. Collectively, the Ballpark Project and the other downtown mitigation and monitoring projects represent the largest historical archaeological program anywhere in the country in the past decade (2000-2007).

4S Ranch Archaeological and Historical Cultural Resources Study: Data recovery program consisted of the excavation of over 2,000 square meters of archaeological deposits that produced over one million artifacts, containing primarily prehistoric materials. The archaeological program at 4S Ranch is the largest archaeological study ever undertaken in the San Diego County area and has produced data that has exceeded expectations regarding the resolution of long-standing research questions and regional prehistoric settlement patterns.

Charles H. Brown Site: Attracted international attention to the discovery of evidence of the antiquity of man in North America. Site located in Mission Valley, in the city of San Diego.

Del Mar Man Site: Study of the now famous Early Man Site in Del Mar, California, for the San Diego Science Foundation and the San Diego Museum of Man, under the direction of Dr. Spencer Rogers and Dr. James R. Moriarty.

Old Town State Park Projects: Consulting Historical Archaeologist. Projects completed in the Old Town State Park involved development of individual lots for commercial enterprises. The projects completed in Old Town include Archaeological and Historical Site Assessment for the Great Wall Cafe (1992), Archaeological Study for the Old Town Commercial Project (1991), and Cultural Resources Site Survey at the Old San Diego Inn (1988).

Site W-20, Del Mar, California: A two-year-long investigation of a major prehistoric site in the Del Mar area of the city of San Diego. This research effort documented the earliest practice of religious/ceremonial activities in San Diego County (circa 6,000 years ago), facilitated the projection of major non-material aspects of the La Jolla Complex, and revealed the pattern of civilization at this site over a continuous period of 5,000 years. The report for the investigation included over 600 pages, with nearly 500,000 words of text, illustrations, maps, and photographs documenting this major study.

City of San Diego Reclaimed Water Distribution System: A cultural resource study of nearly 400 miles of pipeline in the city and county of San Diego.

Master Environmental Assessment Project, City of Poway: Conducted for the City of Poway to produce a complete inventory of all recorded historic and prehistoric properties within the city. The information was used in conjunction with the City's General Plan Update to produce a map matrix of the city showing areas of high, moderate, and low potential for the presence of cultural resources. The effort also included the development of the City's Cultural Resource Guidelines, which were adopted as City policy.

Draft of the City of Carlsbad Historical and Archaeological Guidelines: Contracted by the City of Carlsbad to produce the draft of the City's historical and archaeological guidelines for use by the Planning Department of the City.

The Mid-Bayfront Project for the City of Chula Vista: Involved a large expanse of undeveloped agricultural land situated between the railroad and San Diego Bay in the northwestern portion of the city. The study included the analysis of some potentially historic features and numerous prehistoric

Cultural Resources Survey and Test of Sites Within the Proposed Development of the Audie Murphy Ranch, Riverside County, California: Project manager/director of the investigation of 1,113.4 acres and 43 sites, both prehistoric and historic—including project coordination; direction of field crews; evaluation of sites for significance based on County of Riverside and CEQA guidelines; assessment of cupule, pictograph, and rock shelter sites, co-authoring of cultural resources project report. February- September 2002.

Cultural Resources Evaluation of Sites Within the Proposed Development of the Otay Ranch Village 13 Project, San Diego County, California: Project manager/director of the investigation of 1,947 acres and 76 sites, both prehistoric and historic—including project coordination and budgeting; direction of field crews; assessment of sites for significance based on County of San Diego and CEQA guidelines; co-authoring of cultural resources project report. May-November 2002.

Cultural Resources Survey for the Remote Video Surveillance Project, El Centro Sector, Imperial County: Project manager/director for a survey of 29 individual sites near the U.S./Mexico Border for proposed video surveillance camera locations associated with the San Diego Border barrier Project—project coordination and budgeting; direction of field crews; site identification and recordation; assessment of

potential impacts to cultural resources; meeting and coordinating with U.S. Army Corps of Engineers, U.S. Border Patrol, and other government agencies involved; co-authoring of cultural resources project report. January, February, and July 2002.

Cultural Resources Survey and Test of Sites Within the Proposed Development of the Menifee West GPA, Riverside County, California: Project manager/director of the investigation of nine sites, both prehistoric and historic—included project coordination and budgeting; direction of field crews; assessment of sites for significance based on County of Riverside and CEQA guidelines; historic research; co-authoring of cultural resources project report. January-March 2002.

Mitigation of An Archaic Cultural Resource for the Eastlake III Woods Project for the City of Chula Vista, California: Project archaeologist/ director—included direction of field crews; development and completion of data recovery program including collection of material for specialized faunal and botanical analyses; assessment of sites for significance based on CEQA guidelines; management of artifact collections cataloging and curation; data synthesis; co-authoring of cultural resources project report, in prep. September 2001-March 2002.

Cultural Resources Survey and Test of Sites Within the Proposed French Valley Specific Plan/EIR, Riverside County, California: Project manager/director of the investigation of two prehistoric and three historic sites—included project coordination and budgeting; survey of project area; Native American consultation; direction of field crews; assessment of sites for significance based on CEQA guidelines; cultural resources project report in prep. July-August 2000.

Cultural Resources Survey and Test of Sites Within the Proposed Lawson Valley Project, San Diego County, California: Project manager/director of the investigation of 28 prehistoric and two historic sites— included project coordination; direction of field crews; assessment of sites for significance based on CEQA guidelines; cultural resources project report in prep. July-August 2000.

Cultural Resource Survey and Geotechnical Monitoring for the Mohyi Residence Project, La Jolla, California: Project manager/director of the investigation of a single-dwelling parcel—included project coordination; field survey; assessment of parcel for potentially buried cultural deposits; monitoring of geotechnical borings; authoring of cultural resources project report. Brian F. Smith and Associates, San Diego, California. June 2000.

Enhanced Cultural Resource Survey and Evaluation for the Prewitt/Schmucker/Cavadias Project, La Jolla, California: Project manager/director of the investigation of a single-dwelling parcel—included project coordination; direction of field crews; assessment of parcel for potentially buried cultural deposits; authoring of cultural resources project report. June 2000.

Cultural Resources Survey and Test of Sites Within the Proposed Development of the Menifee Ranch, Riverside County, California: Project manager/director of the investigation of one prehistoric and five historic sites—included project coordination and budgeting; direction of field crews; feature recordation; historic structure assessments; assessment of sites for significance based on CEQA guidelines; historic research; co-authoring of cultural resources project report. February-June 2000.

Salvage Mitigation of a Portion of the San Diego Presidio Identified During Water Pipe Construction for the City of San Diego, California: Project archaeologist/director—included direction of field crews; development and completion of data recovery program; management of artifact collections cataloging and curation; data synthesis and authoring of cultural resources project report in prep. April 2000.

Enhanced Cultural Resource Survey and Evaluation for the Tyrian 3 Project, La Jolla, California: Project manager/director of the investigation of a single-dwelling parcel—included project coordination; assessment of parcel for potentially buried cultural deposits; authoring of cultural resources project report. April 2000.

Enhanced Cultural Resource Survey and Evaluation for the Lamont 5 Project, Pacific Beach, California: Project manager/director of the investigation of a single-dwelling parcel—included project coordination; assessment of parcel for potentially buried cultural deposits; authoring of cultural resources project report. April 2000.

Enhanced Cultural Resource Survey and Evaluation for the Reiss Residence Project, La Jolla, California: Project manager/director of the investigation of a single-dwelling parcel—included project coordination; assessment of parcel for potentially buried cultural deposits; authoring of cultural resources project report. March-April 2000.

Salvage Mitigation of a Portion of Site SDM-W-95 (CA-SDI-211) for the Poinsettia Shores Santalina Development Project and Caltrans, Carlsbad, California: Project archaeologist/ director—included direction of field crews; development and completion of data recovery program; management of artifact collections cataloging and curation; data synthesis and authoring of cultural resources project report in prep. December 1999-January 2000.

Survey and Testing of Two Prehistoric Cultural Resources for the Airway Truck Parking Project, Otay Mesa, California: Project archaeologist/director—included direction of field crews; development and completion of testing recovery program; assessment of site for significance based on CEQA guidelines; authoring of cultural resources project report, in prep. December 1999-January 2000.

Cultural Resources Phase I and II Investigations for the Tin Can Hill Segment of the Immigration and Naturalization Services Triple Fence Project Along the International Border, San Diego County, California: Project manager/director for a survey and testing of a prehistoric quarry site along the border—NRHP eligibility assessment; project coordination and budgeting; direction of field crews; feature recordation; meeting and coordinating with U.S. Army Corps of Engineers; co-authoring of cultural resources project report. December 1999-January 2000.

Mitigation of a Prehistoric Cultural Resource for the Westview High School Project for the City of San Diego, California: Project archaeologist/ director—included direction of field crews; development and completion of data recovery program including collection of material for specialized faunal and botanical analyses; assessment of sites for significance based on CEQA guidelines; management of artifact collections cataloging and curation; data synthesis; co-authoring of cultural resources project report, in prep. October 1999-January 2000.

Mitigation of a Prehistoric Cultural Resource for the Otay Ranch SPA-One West Project for the City of Chula Vista, California: Project archaeologist/director—included direction of field crews; development of data recovery program; management of artifact collections cataloging and curation; assessment of site for significance based on CEQA guidelines; data synthesis; authoring of cultural resources project report, in prep. September 1999-January 2000.

Monitoring of Grading for the Herschel Place Project, La Jolla, California: Project archaeologist/ monitor—included monitoring of grading activities associated with the development of a single- dwelling parcel. September 1999.

Survey and Testing of a Historic Resource for the Osterkamp Development Project, Valley Center, California: Project archaeologist/ director—included direction of field crews; development and completion of data recovery program; budget development; assessment of site for significance based on CEQA guidelines; management of artifact collections cataloging and curation; data synthesis; authoring of cultural resources project report. July-August 1999.

Survey and Testing of a Prehistoric Cultural Resource for the Proposed College Boulevard Alignment Project, Carlsbad, California: Project manager/director —included direction of field crews; development and completion of testing recovery program; assessment of site for significance based on CEQA guidelines; management of artifact collections cataloging and curation; data synthesis;

authoring of cultural resources project report, in prep. July-August 1999.

Survey and Evaluation of Cultural Resources for the Palomar Christian Conference Center Project, Palomar Mountain, California: Project archaeologist—included direction of field crews; assessment of sites for significance based on CEQA guidelines; management of artifact collections cataloging and curation; data synthesis; authoring of cultural resources project report. July-August 1999.

Survey and Evaluation of Cultural Resources at the Village 2 High School Site, Olay Ranch, City of Chula Vista, California: Project manager/director —management of artifact collections cataloging and curation; assessment of site for significance based on CEQA guidelines; data synthesis; authoring of cultural resources project report. July 1999.

Cultural Resources Phase I, II, and III Investigations for the Immigration and Naturalization Services Triple Fence Project Along the International Border, San Diego County, California: Project manager/director for the survey, testing, and mitigation of sites along border—supervision of multiple field crews, NRHP eligibility assessments, Native American consultation, contribution to Environmental Assessment document, lithic and marine shell analysis, authoring of cultural resources project report. August 1997- January 2000.

Phase I, II, and III Investigations for the Scripps Poway Parkway East Project, Poway California: Project archaeologist/project director—included recordation and assessment of multicomponent prehistoric and historic sites; direction of Phase II and III investigations; direction of laboratory analyses including prehistoric and historic collections; curation of collections; data synthesis; coauthorship of final cultural resources report. February 1994; March-September 1994; September-December 1995.

Archaeological Evaluation of Cultural Resources Within the Proposed Corridor for the San Elijo Water Reclamation System Project, San Elijo, California: Project manager/director —test excavations; direction of artifact identification and analysis; graphics production; coauthorship of final cultural resources report. December 1994-July 1995.

Evaluation of Cultural Resources for the Environmental Impact Report for the Rose Canyon Trunk Sewer Project, San Diego, California: Project manager/Director —direction of test excavations; identification and analysis of prehistoric and historic artifact collections; data synthesis; co-authorship of final cultural resources report, San Diego, California. June 1991-March 1992.

Reports/Papers

Author, coauthor, or contributor to over 2,500 cultural resources management publications, a selection of which are presented below.

- 2019 Final Archaeological Data Recovery and Mitigation Monitoring Program for the Westin Hotel and Timeshare Project, City of Carlsbad, California.
- 2019 A Phase I and II Cultural Resources Assessment for the Jack Rabbit Trail Logistics Center Project, City of Beaumont, Riverside County, California.
- 2019 A Section 106 (NHPA) Historic Resources Study for the Altair Project, City of Temecula, California.
- 2019 Phase II Cultural Resource Study for the McElwain Project, City of Murrieta, California.
- 2019 Cultural Resources Mitigation Monitoring Report for the Family Dollar Mecca Project, Riverside County, California.

- 2019 A Cultural Resources Assessment for TR 37177, City of Riverside, Riverside County, California.
- 2019 Cultural Resources Monitoring Report for the Westlake Project (TM 33267), City of Lake Elsinore, Riverside County, California.
- 2019 A Phase I Cultural Resources Survey for the Go Fresh Gas Project, Perris, California.
- 2019 Cultural Resources Monitoring Report for the South Milliken Distribution Center Project, City of Eastvale, Riverside County, California.
- 2019 A Class III Section 106 (NHPA) Study for the Perris Valley Storm Drain Channel Widening Project, Perris, Riverside County, California.
- 2019 A Section 106 (NHPA) Historic Resources Study for the Twin Channel Project, City of San Bernardino, San Bernardino County, California.
- 2019 A Class III Archaeological Study for the Tuscany Valley (TM 33725) Project National Historic Preservation Act Section 106 Compliance, Lake Elsinore, Riverside County, California.
- 2019 A Phase I Cultural Resources Survey for the IPT Perris DC III Western/Nandina Project, Perris, California.
- 2019 A Phase I Cultural Resources Assessment for the Menifee Gateway Project, City of Menifee, Riverside County, California.
- 2019 Results of Archaeological Monitoring at the Atwell Phase 1A Project (formerly Butterfield Specific Plan), City of Banning, Riverside County, California.
- 2019 A Phase I Cultural Resource Study for the Eastvale Self Storage Project, Eastvale, California.
- 2019 A Phase I Cultural Resources Survey Report for the Commercial/Retail NWC Mountain and Lake Streets Project, City of Lake Elsinore, Riverside County, California.
- 2019 A Phase I Cultural Resources Assessment for the Anza Baptist Church Project, Riverside County, California.
- 2019 A Phase I Cultural Resources Assessment for the Inland Propane Project, Riverside County, California.
- 2019 A Phase I and II Cultural Resources Assessment for the Seaton Commerce Center Project, Riverside County, California.
- 2019 A Phase I Cultural Resources Assessment for the Val Verde Logistics Center Project, Riverside County, California.
- 2019 A Phase I Cultural Resources Assessment for the Santa Gertrudis Creek Pedestrian/Bicycle Trail Extension and Interconnect Project, City of Temecula, Riverside County, California.
- 2019 Cultural Resource Report for the U.S. Allied Carriers Project, City of Riverside, Riverside County, California.
- 2018 A Section 106 (NHPA) Historical Resources Study for the Otoy Ranch Village 13 Project, County of San Diego.
- 2018 An Archaeological/Historical Study for the Citracado Business Park West Project, City of Escondido.

- 2018 Cultural Resources Monitoring Report for the Uptown Bressi Ranch Project, Carlsbad.
- 2018 A Phase I Cultural Resources Assessment for the South Pointe Banning Project, CUP 180010, Riverside County, California.
- 2018 Mitigation Monitoring Report for the Stedman Residence Project, 9030 La Jolla Shores Lane, La Jolla, California 92037.
- 2018 Historic Resources Interim Monitoring Reports No. 1 through 4 for the LADOT Bus Maintenance and CNG Fueling Facility, Los Angeles.
- 2018 A Phase I and II Cultural Resources Assessment for the Emerald Acres Project, Winchester, Riverside County.
- 2018 Mitigation Monitoring Report for the Green Dragon Project, City of San Diego.
- 2017 Cultural Resource Monitoring Report for the Moxy Hotel Project, San Diego, California.
- 2017 Mitigation Monitoring Report for the Bayside Fire Station, City of San Diego.
- 2017 Mitigation Monitoring Program for the Ballpark Village Project, City of San Diego.
- 2017 Historical Resource Research Report for the Herbert and Alexina Childs/Thomas L. Shepherd House, 210 Westbourne Street, La Jolla, California 92037.
- 2017 A Phase I and II Cultural Resources Assessment for the Alberhill Ranch Specific Plan Amendment No. 3.1 Project, City of Lake Elsinore, Riverside County, California.
- 2017 A Cultural Resources Mitigation Monitoring Report for the Golden City Project, Tracts 28532-1, -2, -3, -4, and -5, and Tract 34445, City of Murrieta, California.
- 2016 Mitigation Monitoring Report for the Blue Sky San Diego Project, City of San Diego.
- 2016 Historic Resource Research Report for the Midway Postal Service and Distribution Center, 2535 Midway Drive, San Diego, California 92138.
- 2016 Results of the Mitigation Monitoring Program for the Amitai Residence Project, 2514 Ellentown Road, La Jolla, California 92037.
- 2016 Historic American Buildings Survey, Los Angeles Memorial Sports Arena.
- 2015 An Archaeological/Historical Study for the Safari Highlands Ranch Project, City of Escondido, County of San Diego.
- 2015 A Phase I and II Cultural Resources Assessment for the Decker Parcels II Project, Planning Case No. 36962, Riverside County, California.
- 2015 A Phase I and II Cultural Resources Assessment for the Decker Parcels I Project, Planning Case No. 36950, Riverside County, California.
- 2015 Cultural Resource Data Recovery and Mitigation Monitoring Program for Site SDI-10,237 Locus F, Everly Subdivision Project, El Cajon, California.
- 2015 Phase I Cultural Resource Survey for the Woodward Street Senior Housing Project, City of San Marcos, California (APN 218-120-31).

- 2015 An Updated Cultural Resource Survey for the Box Springs Project (TR 33410), APNs 255-230-010, 255-240-005, 255-240-006, and Portions of 257-180-004, 257-180-005, and 257-180-006.
- 2015 A Phase I and II Cultural Resource Report for the Lake Ranch Project, TR 36730, Riverside County, California.
- 2015 A Phase II Cultural Resource Assessment for the Munro Valley Solar Project, Inyo County, California.
- 2014 Cultural Resources Monitoring Report for the Diamond Valley Solar Project, Community of Winchester, County of Riverside.
- 2014 National Historic Preservation Act Section 106 Compliance for the Proposed Saddleback Estates Project, Riverside County, California.
- 2014 A Phase II Cultural Resource Evaluation Report for RIV-8137 at the Toscana Project, TR 36593, Riverside County, California.
- 2014 Cultural Resources Study for the Estates at Del Mar Project, City of Del Mar, San Diego, California (TTM 14-001).
- 2014 Cultural Resources Study for the Aliso Canyon Major Subdivision Project, Rancho Santa Fe, San Diego County, California.
- 2014 Cultural Resources Due Diligence Assessment of the Ocean Colony Project, City of Encinitas.
- 2014 A Phase I and Phase II Cultural Resource Assessment for the Citrus Heights II Project, TTM 36475, Riverside County, California.
- 2013 A Phase I Cultural Resource Assessment for the Modular Logistics Center, Moreno Valley, Riverside County, California.
- 2013 A Phase I Cultural Resources Survey of the Ivey Ranch Project, Thousand Palms, Riverside County, California.
- 2013 Cultural Resources Report for the Emerald Acres Project, Riverside County, California.
- 2013 A Cultural Resources Records Search and Review for the Pala Del Norte Conservation Bank Project, San Diego County, California.
- 2013 An Updated Phase I Cultural Resources Assessment for Tentative Tract Maps 36484 and 36485, Audie Murphy Ranch, City of Menifee, County of Riverside.
- 2013 El Centro Town Center Industrial Development Project (EDA Grant No. 07-01-06386); Result of Cultural Resource Monitoring.
- 2013 Cultural Resources Survey Report for the Renda Residence Project, 9521 La Jolla Farms Road, La Jolla, California.
- 2013 A Phase I Cultural Resource Study for the Ballpark Village Project, San Diego, California.
- 2013 Archaeological Monitoring and Mitigation Program, San Clemente Senior Housing Project, 2350 South El Camino Real, City of San Clemente, Orange County, California (CUP No. 06-065; APN-060-032-04).
- 2012 Mitigation Monitoring Report for the Los Peñasquitos Recycled Water Pipeline.

- 2012 Cultural Resources Report for Menifee Heights (Tract 32277).
- 2012 A Phase I Cultural Resource Study for the Altman Residence at 9696 La Jolla Farms Road, La Jolla, California 92037.
- 2012 Mission Ranch Project (TM 5290-1/MUP P87-036W3): Results of Cultural Resources Monitoring During Mass Grading.
- 2012 A Phase I Cultural Resource Study for the Payan Property Project, San Diego, California.
- 2012 Phase I Archaeological Survey of the Rieger Residence, 13707 Durango Drive, Del Mar, California 92014, APN 300-369-49.
- 2011 Mission Ranch Project (TM 5290-1/MUP P87-036W3): Results of Cultural Resources Monitoring During Mass Grading.
- 2011 Mitigation Monitoring Report for the 1887 Viking Way Project, La Jolla, California.
- 2011 Cultural Resource Monitoring Report for the Sewer Group 714 Project.
- 2011 Results of Archaeological Monitoring at the 10th Avenue Parking Lot Project, City of San Diego, California (APNs 534-194-02 and 03).
- 2011 Archaeological Survey of the Pelberg Residence for a Bulletin 560 Permit Application; 8335 Camino Del Oro; La Jolla, California 92037 APN 346-162-01-00.
- 2011 A Cultural Resources Survey Update and Evaluation for the Robertson Ranch West Project and an Evaluation of National Register Eligibility of Archaeological sites for Sites for Section 106 Review (NHPA).
- 2011 Mitigation Monitoring Report for the 43rd and Logan Project.
- 2011 Mitigation Monitoring Report for the Sewer Group 682 M Project, City of San Diego Project #174116.
- 2011 A Phase I Cultural Resource Study for the Nooren Residence Project, 8001 Calle de la Plata, La Jolla, California, Project No. 226965.
- 2011 A Phase I Cultural Resource Study for the Keating Residence Project, 9633 La Jolla Farms Road, La Jolla, California 92037.
- 2010 Mitigation Monitoring Report for the 15th & Island Project, City of San Diego; APNs 535-365-01, 535-365-02 and 535-392-05 through 535-392-07.
- 2010 Archaeological Resource Report Form: Mitigation Monitoring of the Sewer and Water Group 772 Project, San Diego, California, W.O. Nos. 187861 and 178351.
- 2010 Pottery Canyon Site Archaeological Evaluation Project, City of San Diego, California, Contract No. H105126.
- 2010 Archaeological Resource Report Form: Mitigation Monitoring of the Racetrack View Drive Project, San Diego, California; Project No. 163216.
- 2010 A Historical Evaluation of Structures on the Butterfield Trails Property.
- 2010 Historic Archaeological Significance Evaluation of 1761 Haydn Drive, Encinitas, California (APN

260-276-07-00).

- 2010 Results of Archaeological Monitoring of the Heller/Nguyen Project, TPM 06-01, Poway, California.
- 2010 Cultural Resource Survey and Evaluation Program for the Sunday Drive Parcel Project, San Diego County, California, APN 189-281-14.
- 2010 Archaeological Resource Report Form: Mitigation Monitoring of the Emergency Garnet Avenue Storm Drain Replacement Project, San Diego, California, Project No. B10062
- 2010 An Archaeological Study for the 1912 Spindrift Drive Project
- 2009 Cultural Resource Assessment of the North Ocean Beach Gateway Project City of San Diego #64A-003A; Project #154116.
- 2009 Archaeological Constraints Study of the Morgan Valley Wind Assessment Project, Lake County, California.
- 2008 Results of an Archaeological Review of the Helen Park Lane 3.1-acre Property (APN 314-561-31), Poway, California.
- 2008 Archaeological Letter Report for a Phase I Archaeological Assessment of the Valley Park Condominium Project, Ramona, California; APN 282-262-75-00.
- 2007 Archaeology at the Ballpark. Brian F. Smith and Associates, San Diego, California. Submitted to the Centre City Development Corporation.
- 2007 Result of an Archaeological Survey for the Villages at Promenade Project (APNs 115-180-007-3, 115-180-049-1, 115-180-042-4, 115-180-047-9) in the City of Corona, Riverside County.
- 2007 Monitoring Results for the Capping of Site CA-SDI-6038/SDM-W-5517 within the Katzer Jamul Center Project; P00-017.
- 2006 Archaeological Assessment for The Johnson Project (APN 322-011-10), Poway, California.
- 2005 Results of Archaeological Monitoring at the El Camino Del Teatro Accelerated Sewer Replacement Project (Bid No. K041364; WO # 177741; CIP # 46-610.6.
- 2005 Results of Archaeological Monitoring at the Baltazar Draper Avenue Project (Project No. 15857; APN: 351-040-09).
- 2004 TM 5325 ER #03-14-043 Cultural Resources.
- 2004 An Archaeological Survey and an Evaluation of Cultural Resources at the Salt Creek Project. Report on file at Brian F. Smith and Associates.
- 2003 An Archaeological Assessment for the Hidden Meadows Project, San Diego County, TM 5174, Log No. 99-08-033. Report on file at Brian F. Smith and Associates.
- 2003 An Archaeological Survey for the Manchester Estates Project, Coastal Development Permit #02-009, Encinitas, California. Report on file at Brian F. Smith and Associates.
- 2003 Archaeological Investigations at the Manchester Estates Project, Coastal Development Permit #02-009, Encinitas, California. Report on file at Brian F. Smith and Associates.
- 2003 Archaeological Monitoring of Geological Testing Cores at the Pacific Beach Christian Church Project. Report on file at Brian F. Smith and Associates.

- 2003 San Juan Creek Drilling Archaeological Monitoring. Report on file at Brian F. Smith and Associates.
- 2003 Evaluation of Archaeological Resources Within the Spring Canyon Biological Mitigation Area, Otay Mesa, San Diego County, California. Brian F. Smith and Associates, San Diego, California.
- 2002 An Archaeological/Historical Study for the Otay Ranch Village 13 Project (et al.). Brian F. Smith and Associates, San Diego, California.
- 2002 An Archaeological/Historical Study for the Audie Murphy Ranch Project (et al.). Brian F. Smith and Associates, San Diego, California.
- 2002 Results of an Archaeological Survey for the Remote Video Surveillance Project, El Centro Sector, Imperial County, California. Brian F. Smith and Associates, San Diego, California.
- 2002 A Cultural Resources Survey and Evaluation for the Proposed Robertson Ranch Project, City of Carlsbad. Brian F. Smith and Associates, San Diego, California.
- 2002 Archaeological Mitigation of Impacts to Prehistoric Site SDI-7976 for the Eastlake III Woods Project, Chula Vista, California. Brian F. Smith and Associates, San Diego, California.
- 2002 An Archaeological/Historical Study for Tract No. 29777, Menifee West GPA Project, Perris Valley, Riverside County. Brian F. Smith and Associates, San Diego, California.
- 2002 An Archaeological/Historical Study for Tract No. 29835, Menifee West GPA Project, Perris Valley, Riverside County. Brian F. Smith and Associates, San Diego, California.
- 2001 An Archaeological Survey and Evaluation of a Cultural Resource for the Moore Property, Poway. Brian F. Smith and Associates, San Diego, California.
- 2001 An Archaeological Report for the Mitigation, Monitoring, and Reporting Program at the Water and Sewer Group Job 530A, Old Town San Diego. Brian F. Smith and Associates, San Diego, California.
- 2001 A Cultural Resources Impact Survey for the High Desert Water District Recharge Site 6 Project, Yucca Valley. Brian F. Smith and Associates, San Diego, California.
- 2001 Archaeological Mitigation of Impacts to Prehistoric Site SDI-13,864 at the Otay Ranch SPA-One West Project. Brian F. Smith and Associates, San Diego, California.
- 2001 A Cultural Resources Survey and Site Evaluations at the Stewart Subdivision Project, Moreno Valley, County of San Diego. Brian F. Smith and Associates, San Diego, California.
- 2000 An Archaeological/Historical Study for the French Valley Specific Plan/EIR, French Valley, County of Riverside. Brian F. Smith and Associates, San Diego, California.
- 2000 Results of an Archaeological Survey and the Evaluation of Cultural Resources at The TPM#24003–Lawson Valley Project. Brian F. Smith and Associates, San Diego, California.
- 2000 Archaeological Mitigation of Impacts to Prehistoric Site SDI-5326 at the Westview High School Project for the Poway Unified School District. Brian F. Smith and Associates, San Diego, California.
- 2000 An Archaeological/Historical Study for the Menifee Ranch Project. Brian F. Smith and Associates, San Diego, California.
- 2000 An Archaeological Survey and Evaluation of Cultural Resources for the Bernardo Mountain Project, Escondido, California. Brian F. Smith and Associates, San Diego, California.

- 2000 A Cultural Resources Impact Survey for the Nextel Black Mountain Road Project, San Diego, California. Brian F. Smith and Associates, San Diego, California.
- 2000 A Cultural Resources Impact Survey for the Rancho Vista Project, 740 Hilltop Drive, Chula Vista, California. Brian F. Smith and Associates, San Diego, California.
- 2000 A Cultural Resources Impact Survey for the Poway Creek Project, Poway, California. Brian F. Smith and Associates, San Diego, California.
- 2000 Cultural Resource Survey and Geotechnical Monitoring for the Mohyi Residence Project. Brian F. Smith and Associates, San Diego, California.
- 2000 Enhanced Cultural Resource Survey and Evaluation for the Prewitt/Schmucker/Cavadias Project. Brian F. Smith and Associates, San Diego, California.
- 2000 Enhanced Cultural Resource Survey and Evaluation for the Lamont 5 Project. Brian F. Smith and Associates, San Diego, California.
- 2000 Salvage Excavations at Site SDM-W-95 (CA-SDI-211) for the Poinsettia Shores Santalina Development Project, Carlsbad, California. Brian F. Smith and Associates, San Diego, California.
- 2000 Enhanced Cultural Resource Survey and Evaluation for the Reiss Residence Project, La Jolla, California. Brian F. Smith and Associates, San Diego, California.
- 2000 Enhanced Cultural Resource Survey and Evaluation for the Tyrian 3 Project, La Jolla, California. Brian F. Smith and Associates, San Diego, California.
- 2000 A Report for an Archaeological Evaluation of Cultural Resources at the Otay Ranch Village Two SPA, Chula Vista, California. Brian F. Smith and Associates, San Diego, California.
- 2000 An Archaeological Evaluation of Cultural Resources for the Airway Truck Parking Project, Otay Mesa, County of San Diego. Brian F. Smith and Associates, San Diego, California.
- 2000 Results of an Archaeological Survey and Evaluation of a Resource for the Tin Can Hill Segment of the Immigration and Naturalization and Immigration Service Border Road, Fence, and Lighting Project, San Diego County, California. Brian F. Smith and Associates, San Diego, California.
- 1999 An Archaeological Survey of the Home Creek Village Project, 4600 Block of Home Avenue, San Diego, California. Brian F. Smith and Associates, San Diego, California.
- 1999 An Archaeological Survey for the Sgobassi Lot Split, San Diego County, California. Brian F. Smith and Associates, San Diego, California.
- 1999 An Evaluation of Cultural Resources at the Otay Ranch Village 11 Project. Brian F. Smith and Associates, San Diego, California.
- 1999 An Archaeological/Historical Survey and Evaluation of a Cultural Resource for The Osterkamp Development Project, Valley Center, California. Brian F. Smith and Associates, San Diego, California.
- 1999 An Archaeological Survey and Evaluation of Cultural Resources for the Palomar Christian Conference Center Project, Palomar Mountain, California. Brian F. Smith and Associates, San Diego, California.
- 1999 An Archaeological Survey and Evaluation of a Cultural Resource for the Proposed College Boulevard Alignment Project. Brian F. Smith and Associates, San Diego, California.

- 1999 Results of an Archaeological Evaluation for the Anthony's Pizza Acquisition Project in Ocean Beach, City of San Diego (with L. Pierson and B. Smith). Brian F. Smith and Associates, San Diego, California.
- 1996 An Archaeological Testing Program for the Scripps Poway Parkway East Project. Brian F. Smith and Associates, San Diego, California.
- 1995 Results of a Cultural Resources Study for the 4S Ranch. Brian F. Smith and Associates, San Diego, California.
- 1995 Results of an Archaeological Evaluation of Cultural Resources Within the Proposed Corridor for the San Elijo Water Reclamation System. Brian F. Smith and Associates, San Diego, California.
- 1994 Results of the Cultural Resources Mitigation Programs at Sites SDI-11,044/H and SDI-12,038 at the Salt Creek Ranch Project. Brian F. Smith and Associates, San Diego, California.
- 1993 Results of an Archaeological Survey and Evaluation of Cultural Resources at the Stallion Oaks Ranch Project. Brian F. Smith and Associates, San Diego, California.
- 1992 Results of an Archaeological Survey and the Evaluation of Cultural Resources at the Ely Lot Split Project. Brian F. Smith and Associates, San Diego, California.
- 1991 The Results of an Archaeological Study for the Walton Development Group Project. Brian F. Smith and Associates, San Diego, California.

Tracy A. Stropes, MA, RPA

Senior Project Archaeologist

Brian F. Smith and Associates, Inc.
14010 Poway Road • Suite A •
Phone: (858) 679-8218 • Fax: (858) 679-9896 • E-Mail: tstropes@bfsa-ca.com



Education

Master of Arts, Anthropology, San Diego State University, California	2007
Bachelor of Science, Anthropology, University of California, Riverside	2000

Professional Memberships

Register of Professional Archaeologists
Society for California Archaeology
Archaeological Institute of America

Experience

Project Archaeologist Brian F. Smith and Associates, Inc.	March 2009–Present Poway, California
--	---

Project Management of all phases of archaeological investigations for local, state, and federal agencies, field supervision, lithic analysis, National Register of Historic Places (NRHP) and California Environmental Quality Act (CEQA) site evaluations, and authoring/coauthoring of cultural resource management reports.

Archaeological Principal Investigator TRC Solutions	June 2008–February 2009 Irvine, California
--	---

Cultural resource segment of Natural Sciences and Permitting Division; management of archaeological investigations for private companies and local, state, and federal agencies, personnel management, field and laboratory supervision, lithic analysis, Native American consultation and reporting, MRHP and CEQA site evaluations, and authoring/coauthoring cultural resource management reports.

Principal Investigator and Project Archaeologist Archaeological Resource Analysts	June 2006–May 2008 Oceanside, California
--	---

As a sub consultant, served as Principal Investigator and Project Archaeologist for several projects for SRS Inc., including field direction, project and personnel management, lab analysis, and authorship of company reports.

Project Archaeologist Gallegos & Associates	September 1996–June 2006 Carlsbad, California
--	--

Project management, laboratory management, lithic analysis, field direction, Native American consultation, report authorship/technical editing, and composition of several data

recovery/preservation programs for both CEQA and NEPA level compliance.

Project Archaeologist
Macko Inc.

September 1993–September 1996
Santa Ana, California

Project management, laboratory management, lithic analysis, field supervision, and report authorship/technical editing.

Archaeological Field Technician
Chambers Group Inc.

January 1993–September 1993
Irvine, California

Archaeological excavation, surveying, monitoring, wet screen facilities management, and project logistics.

Archaeological Field Technician
John Minch and Associates

May 1992–September 1992
San Juan Capistrano, California

Archaeological excavation, surveying, monitoring, wet screen facilities management, and project logistics.

Reports/Papers

Principal Author

- 2020 A Section 106 (NHPA) Historic Resources Study for the Pacifica Estates Project, Fallbrook, San Diego County, California. Prepared for Jose Islas.
- 2019 A Cultural Resource Assessment for the Glen Circle Project, Poway, California. Prepared for MDD Homes.
- 2019 Cultural Resources Survey for the Highlands at Warner Springs and Off-Site Fire Access Road Project, Warner Springs, San Diego County, California. Prepared for Warner Springs Estates, LLC.
- 2019 A Cultural Resources Assessment for the 8801 East Marginal Way Project, City of Tukwila, King County, Washington. Prepared for CenterPoint Properties Trust.
- 2019 Cultural Resource Monitoring Report for the 7980 Park Village Road Emergency Repair Project, San Diego, California. Prepared for Orion Construction Corporation.
- 2019 Mitigation Monitoring and Reporting Program for the Harmony Grove Village, San Diego County, California. Prepared for Lennar – San Diego Division.
- 2019 Cultural Resource Monitoring Report for the Price-Cohen Residence Project, 2045 Lowry Place, La Jolla, California 92037. Prepared for Lena Price and Thomas Cohen.
- 2019 A Section 106 (NHPA) Historic Resources Study for the Melrose Drive Widening Project, City of Oceanside, California. Prepared for California West Communities.
- 2019 A Cultural Resources Study for the Majestic Chino Heritage Project, City of Chino, San Bernardino County, California. Prepared for T&B Planning, Inc.

- 2019 Cultural Resources Study for the Ocean Breeze Ranch Project, Bonsall, San Diego County, California. Prepared for Ocean Breeze Ranch, LLC.
- 2019 Mitigation Monitoring and Reporting Program for the Arthofer Residence Project, 1890 Viking Way, La Jolla, California. Prepared for Frank and Sharon Arthofer.
- 2019 A Phase I and II Cultural Resources Assessment for the Greentree Ranch Project, Riverside County, California. Prepared for T&B Planning, Inc.
- 2018 A Section 106 (NHPA) Historic Resources Study for the Escondido Country Club Project, SPL-2018-00135-CJA, City of Escondido, California. Prepared for New Urban West, Inc.
- 2018 A Phase I Cultural Resources Study for the North County Plaza Project, Carlsbad, California. Prepared for Planning Systems, Inc.
- 2018 Cultural Resources Addendum Report for the Ivey Palms Project, Thousand Palms, Riverside, California. Prepared for T&B Planning, Inc.
- 2017 Cultural Resource Monitoring Report for the Altman Residence Project, 9696 La Jolla Farms Road, La Jolla, California 92037. Prepared for Steve and Lisa Altman.
- 2017 Cultural Resources Study for the Escondido Country Club Project, City of Escondido, California. Prepared for New Urban West, Inc.
- 2017 A Class III Archaeological Study for the Tract 28859 Project for Section 106 Compliance. Prepared for Menifee 28859, LLC.
- 2016 A Section 106 (NHPA) Historic Resources Study for the Lake Ranch Project, TR 36730, Riverside County, California.
- 2016 Mitigation Monitoring and Reporting Program for the Imperial Beach Bikeway Village Project, 536 13th Street and 535 Florence Street, Imperial Beach, California. Prepared for Bikeway Village, LLC.
- 2015 Cultural Resource Data Recovery and Mitigation Monitoring Program for Site SDI-10,237 Locus F, Evely Subdivision Project, El Cajon, California. Prepared for Shea Homes.
- 2015 A Class III Historic Resource Study for the Miramar Clearwell Improvements Project, San Diego, California. Prepared for Global Environmental Permitting, Inc.
- 2015 A Class III Historic Resource Study for the College Boulevard Project, Carlsbad, California. Prepared for Bent West, LLC.
- 2015 A Class III Archaeological Study for the Parkside Project for Section 106 Compliance, Riverside County, California. Prepared for Lennar Corporation.
- 2015 A Cultural Resource Assessment for the Zhao Residence Project, Poway, California (275-240-66). Prepared for Pacific Sotheby's International Realty.
- 2014 Phase I Cultural Resources Survey for the Utah Trail Project, County of San Bernardino, California (APNs 621-281-22 through 621-281-25). Prepared for Ecos Energy, LLC.
- 2014 Phase I Archaeological Assessment for the Sky Canyon Project (PP25309), Riverside County, California. Prepared for Rocky Snider California Project Management Office.

- 2014 Phase I Cultural Resources Survey for the Shoshone Valley Road Project, County of San Bernardino, California (APNs 613-233-01, -02, -03, -04, -27, -28, -29, and -30). Prepared for Ecos Energy, LLC.
- 2014 Phase I Cultural Resources Survey for the Nuevo 055 Project, Community of Nuevo, County of Riverside. Prepared for Ecos Energy, LLC.
- 2014 A Phase I Cultural Resource Study for the Bourgeois Project, Poway, California. Prepared for Bill Yen & Associates, Inc.
- 2014 A Cultural Resources Survey for the Aliso Canyon Major Subdivision Project, Rancho Santa Fe, San Diego County, California. Prepared for Zephyr Partners.
- 2014 Cultural Resource Monitoring Report for the Sewer Group 723 Project, San Diego, California. Prepared for Ortiz Corporation.
- 2013 A Phase I Cultural Resource Study for the Rogers Tierra Bonita Project, Poway, California. Prepared for John D. Fitch & Associates.
- 2013 A Cultural Resource Assessment Update for the Girard Townhome Project, TR 35477, Riverside County, California. Prepared for G8 Development, Inc.
- 2013 Phase I Archaeological Assessment for the Ridge Park Project, City of Temecula, California. Prepared for Ambient Communities.
- 2013 A Phase I and Phase II Cultural Resource Study for the Citrus Heights/Fairway Drive Project, Riverside County, California. Prepared for CV Communities.
- 2013 Phase I Archaeological Assessment for the Bixby Highgrove Project (TTM 36437), Riverside County, California. Prepared for T&B Planning, Inc.
- 2013 A Class III Cultural Resources Study for the Ramona Ranch Affordable Housing Project for Section 106 Compliance, San Diego County, California. Prepared for AMCAL Multi-Housing, Inc.
- 2013 Phase I Archaeological Assessment for the Yates Road Project (TTM 36437), Riverside County, California. Prepared for CV Communities, LLC.
- 2013 A Cultural Resources Survey and Evaluation Program for the Warner Ranch Project, San Diego County, California. Prepared for HP Warner Ranch, LP.
- 2013 A Phase I Cultural Resource Assessment for TPM 36585, Riverside County, California. Prepared for GF Real Estate Services.
- 2013 A Class III Cultural Resources Study for TR 31597 and TR 32627, Riverside County, California. Prepared for Standard Pacific Homes.
- 2013 Phase I Cultural Resources Survey for the Sunny Cal Project, City of Beaumont, County of Riverside. Prepared for CV Communities, LLC.
- 2013 A Class III Cultural Resources Study for The Sierra Bella Project for Section 106 Compliance, Riverside County, California. Prepared for Forestar Corona, LLC.
- 2013 A Class III Cultural Resources Study for the Moosa Creek Mitigation Bank Project. Prepared for a Creek LLC.

- 2013 Archaeological Survey of the Rohmiller Residence for a Bulletin 560 Permit Application, 2350 Calle De La Garza, La Jolla, California 92037 (APN 346-180-22). Prepared for Architect Mark D. Lyon, Inc.
- 2013 Cultural Resources Survey and Evaluation Program for the Oak Creek Project, City of Escondido, California. Prepared for New Urban West, Inc.
- 2013 Phase I Cultural Resources Survey for the Hope Harbor Project, Riverside County, California. Prepared for Medhat Rofael.
- 2013 Archaeological Survey of the Liske Residence, La Jolla, California. Prepared for ECEGC Inc.
- 2013 An Updated Phase I Cultural Resources Assessment for Tentative Tract Maps Nos. 36484 and 36485, Audie Murphy Ranch. Prepared for Brookfield Residential.
- 2013 A Phase I Cultural Resources Study For the 401 West Ash Street Project San Diego, California. Prepared for PierPoint Legacy Holdings, LLC.
- 2013 Cultural Resource Test Plan for the Ten on Columbia Project, San Diego, California. Prepared for InDev, Inc.
- 2013 Phase I Cultural Resources Survey for the Washington Avenue Project, City of Murrieta, California. Prepared for Coastal Land Solutions.
- 2012 Phase I Cultural Resources Survey for the Wildomar 23 Project, Riverside County, California. Prepared for Lennar.
- 2012 A Class III Cultural Resources Study for the USGS Creepmeter Project. Prepared for Bureau of Land Management, El Centro Office.
- 2012 Mitigation Monitoring Report for the for the Johnston Residence Project, La Jolla, California. Prepared for Heather Johnston.
- 2012 A Phase I Cultural Resource Study for the Howell Residence Project, Poway, California. Prepared for Cal Howell.
- 2012 Cultural Resource Monitoring Report for the Sewer and Water Group 799 Project. Prepared for Burtech Pipeline.
- 2012 A Phase I Cultural Resources Study For the Villa Hermosa Project San Diego, California. Prepared for David Chow.
- 2012 A Phase I Cultural Resource Study for the Payan Property Project, San Diego, California. Prepared for Landmark Engineering.
- 2012 A Phase I Cultural Resource Study for the El Camino Real Widening Project, Carlsbad, California. Prepared for Planning Systems.
- 2012 A Phase I Cultural Resource Study for the Encore Trust Project, La Jolla, California. Prepared for Metcalf Development and Consulting.
- 2012 A Phase I Cultural Resource Study for the Andres Residence Project, La Jolla, California. Prepared for Engineering Design Group.

- 2012 Phase I Cultural Resources Survey for the Diamond Springs Project, Riverside County, California. Prepared for Benjamin J. Stables III, B 3 Consulting.
- 2012 A Phase I Cultural Resource Study for the ActivCare at Mission Bay Project, San Diego, California. Prepared for ActivCare Living, Inc.
- 2012 Mitigation Monitoring Report for the Water Group 790 Project, City of San Diego, California. Prepared for Orion Construction Corporation.
- 2012 Results of the Mitigation Monitoring Program for the Mission Brewery Villas Project, City of San Diego, California. Prepared for Eilar Associates, Inc.
- 2012 Cultural Resource Monitoring Report for the Gatto Residence Project, La Jolla, California. Prepared for Marengo Morton Architects Inc.
- 2012 Cultural Resource Monitoring Report for the Sunset Cliffs Trunk Sewer Project, City of San Diego, California. Prepared for KTA Construction.
- 2012 Mitigation Monitoring Report for the Sewer Group 682M Project, City of San Diego, California. Prepared for BRH Garver.
- 2012 Cultural Resource Monitoring Report for the Pelberg Residence Project, City of San Diego, California. Prepared for Linda and Art Pelberg.
- 2012 Cultural Resource Monitoring Report for the Rose Creek Bikeway Bridge Project, City of San Diego, California. Prepared for Flatiron West, Inc.
- 2011 Mitigation Monitoring Report for the South Mission Valley Trunk Sewer Project, City of San Diego, California. Prepared for HPS Mechanical, Inc.
- 2011 A Class III Cultural Resources Study for the La Dama de Oro Project, San Bernardino County, California. Prepared for Mohave Gold Mining & Exploration, Inc.
- 2011 Mitigation Monitoring Report for the Jacobs Health Care Facility Project, City of San Diego, California. Prepared for Jacobs Health Care, LLC.
- 2011 A Phase I Cultural Resources Study For the Rowland Auto Dismantling Project, City of San Diego, California. Prepared for David Rowland.
- 2011 A Phase I Cultural Resource Study for the Dye Residence Project, La Jolla, California. Prepared for Eric Dye.
- 2011 Phase I Cultural Resources Survey for the Santa Rosa Academy Project, Riverside County, California. Prepared for Santa Rosa Academy Charter School c/o Bradley Burke Competitive Edge Development, LLC.
- 2011 Cultural Resource Data Recovery Study for SDI-4606 Locus B for Saint Gabriel's Catholic Church, Poway, California. Prepared for Saint Gabriel's Catholic Church.
- 2011 A Phase I Cultural Resource Study for the Nooren Residence Project, La Jolla, California. Prepared for Jack Nooren.
- 2011 Mitigation Monitoring Report for the Sewer and Water Group 768 Project, City of San Diego, California. Prepared for Ortiz Corporation.

- 2011 Cultural Resource Test for the 10th Avenue Parking Lot Project, City of San Diego, California. Prepared for 11th and B Investment Associates, LLC.
- 2011 A Cultural Resources Study for the Ampudia Lot Project, City of San Diego, California. Prepared for Venture Pacific Commercial Services, Inc.
- 2011 A Phase I Cultural Resource Study for the Hyde Residence Project, La Jolla, California. Prepared for Paul and Denise Hyde.
- 2011 A Phase I Cultural Resource Study for the Fialko Residence Project, La Jolla, California. Prepared for Thomas Armstrong Construction, Inc.
- 2011 Mitigation Monitoring Report for the Sewer Group 682M Project, City of San Diego, California. Prepared for HTA Engineering & Construction Inc.
- 2011 A Phase I Cultural Resource Study for the Butterfield Residence Project, La Jolla, California. Prepared for Geotechnical Exploration, Inc.
- 2011 A Cultural Resource Monitoring Report for the Eichen Residence Project, San Diego, California. Prepared for Steigerwald-Dougherty, Inc.
- 2011 Phase I Cultural Resources Survey for the Galway Downs Project, Riverside County, California. Prepared for Trip Hord.
- 2011 Cultural Resource Monitoring Report for Rancho Bella Vista Phase IV (TR 31871), Riverside County, California. Prepared for Lennar Inland Division.
- 2011 Cultural Resource Monitoring Report for the Salvation Army Vehicle Storage Area Demolition Project. Prepared for The Salvation Army General Counsel.
- 2011 A Phase I Cultural Resource Study for the Kates Residence Project, La Jolla, California. Prepared for Brad and Shannon Kates.
- 2011 A Phase I Cultural Resource Study for the Kralik Residence Project, La Jolla, California. Prepared for John Kralik.
- 2010 An Archaeological Monitoring Report for the Cricket Cell Tower Project (Permit # 3399 06-032), San Diego County, California. Prepared for Ken Hayes.
- 2010 A Cultural Resources Study for the 47th Street Warehouse Project City of San Diego, California, Project No. 190957. Prepared for 47th Street Properties.
- 2010 A Cultural Resource Study for the Dickenson Ranch Project, San Bernardino County, California. Prepared for Dickenson and Son Property Management and Investments.
- 2010 A Phase I Cultural Resources Survey for the Young Family Trust Lot Split Project City of Escondido, California. Prepared for Young Family Trust.
- 2010 An Archaeological Monitoring Report for the Jamul Rural Fire Station Auxiliary Access Road Project, San Diego County, California. Prepared for TCB.
- 2010 Cultural Resource Survey and Evaluation Program for the Citracado Parkway Extension Project, City of Escondido, California. Prepared for AECOM.

- 2010 Phase I Cultural Resources Survey for the Sycamore Creek Specific Plan No. 256 Amendment No. 2, Riverside County, California. Prepared for T&B Planning.
- 2010 A Phase III Cultural Resource Data Recovery Program for CA-SDI-16,986, Hidden Meadows, San Diego County, California (TPM 20794). Tuscan Ridge, LLC.
- 2010 Historic Properties Treatment Plan for the Talega (64 Area) 12kV Conversion Project Marine Corps Base Camp Pendleton San Diego County California. Prepared for Synergy Electric Company, Inc.
- 2010 A Cultural Resources Survey and Evaluation Program for the Highlands at Warner Springs Project, Warner Springs, San Diego County, California. Prepared for Warner Springs Estates, LLC.
- 2010 A Cultural Resources Literature Review for the 11099 North Torrey Pines Road Project, San Diego, California. Prepared for Touchstone Investments.
- 2010 A Phase I Cultural Resources Survey for the San Jacinto Poultry Ranch Storage Building Project, San Jacinto, California. Prepared for Moark, LLC.
- 2010 A Phase III Cultural Resource Data Recovery Program for SDI-16986, Hidden Meadows, San Diego, California (TPM 20794). Prepared for Tuscan Ridge, LLC.
- 2010 Cultural Resources Study for the Dos Colinas Project, Carlsbad, California. Prepared for Dos Colinas, LLC.
- 2010 A Phase I Archaeological Survey of the Greater Alpine Fire Safe Council Horsethief Vegetation Management Project. Prepared for the Greater Alpine Fire Safe Council.
- 2010 A Phase I Cultural Resource Study for the Moses Residence Project, La Jolla, California. Prepared for Brian Moses.
- 2010 Pottery Canyon Site Archaeological Evaluation Project City of San Diego, California. Prepared for the City of San Diego Park and Recreation Department.
- 2010 A Phase I Cultural Resource Study for the Shabaz Residence Project, La Jolla, California. Prepared for Negar Shabaz.
- 2009 A Phase I Cultural Resources Study for the Kramer 453 Project, San Bernardino County, California. Prepared for LightSource Renewables LLC.
- 2009 A Cultural Resources Study for the Hronopoulus Residence Project, City of San Diego, California. Prepared for Andreas Hronopoulus.
- 2009 A Cultural Resources Monitoring Report for the East Point Loma Trunk Sewer Project, San Diego, California. Prepared for Southern California Soil and Testing.
- 2009 A Cultural Resources Study for the McKean SDP Project. San Diego, California.
- 2009 An Archaeological Assessment for the Rivera-Placentia Project, City of Riverside, California. Prepared for Riverside Construction Company.
- 2009 Cultural Resource Data Recovery Plan for the North Ocean Beach Gateway Project. Prepared for the City of San Diego and KTU+A.
- 2009 Cultural Resource Letter Report for the Borrego Substation Feasibility Study, Borrego Springs,

- California. Prepared for RBF Consulting.
- 2009 A Cultural Resource Study for the Gatto Residence Project, La Jolla, California. Prepared for Marengo Martin Architects Inc.
- 2009 A Cultural Resource Report for the Central Feeder Connection Project, San Bernardino, California. Prepared for Albert A. Webb and Associates.
- 2009 A Cultural Resource Report for the Clay Street Connection Project, Riverside, California. Prepared for Albert A. Webb and Associates.
- 2009 A Cultural Resource Report for the Green Hills Project, San Diego County, California. Prepared for Atlas Investments, LLC.
- 2009 A Cultural Resource Report for the La Sierra Pipeline Project, Riverside, California. Prepared for Albert A. Webb and Associates.
- 2009 Cultural Resources Monitoring Report for the East Point Loma Trunk Sewer Project. Prepared for Southern California Soil & Testing.
- 2009 A Cultural Resource Report for the Mockingbird Connection Project, Riverside, California. Prepared for Albert A. Webb and Associates.
- 2009 A Cultural Resource Report for the Mesquite Lake Treatment Plan Project, Imperial County, California. Prepared for Albert A. Webb and Associates.
- 2008 Phase I Cultural Resource Survey for the 28220 Highridge Road Development Project, Rancho Palos Verdes, California. Prepared for REC Development.
- 2008 Wild Goose Expansion 3 Project Butte County, California Colusa County, California. Prepared for Niska Gas Storage LLC.
- 2008 Class III Cultural Resource Survey for the Burlington Northern Santa Fe Four Railway Bridge Renewal Project, San Bernardino County, California. Prepared for BNSF Railway Company.
- 2008 I-80 Colfax Site Cultural Resource Records Search Report, Placer County, California. Prepared for Granite Construction Company.
- 2008 I-80 Gold Run Site Cultural Resource Records Search Report, Placer County, California. Prepared for Granite Construction Company.
- 2008 Cultural Resource Monitoring at 31431 Camino Capistrano, San Juan Capistrano, California. Prepared for Herman Weissker, Inc.
- 2008 Cultural Resource Inventory for the Snow White Pumice Mine, Hinkley, California. Prepared for U.S. Mining and Minerals Corporation.
- 2007 Nodule Industries of North Coastal San Diego: Change and Stasis in 10,000 Years of Lithic Technology. Masters thesis on file, San Diego State University.
- 2007 Cultural Resource Inventory for Empire Homes (APN 104-180-04), Lake Forest, California. Prepared for Empire Homes.
- 2007 Phase I Archaeological Assessment for APN 104-200-09, Beaumont, California. Prepared for Mary

Chan.

- 2007 Cultural Resource Inventory for Empire Homes (APN 104-180-04), Lake Forest, California. Prepared for Empire Homes.
- 2006 Carlsbad Municipal Golf Course Data Recovery Program for CA-SDI-8694, and Indexing and Preservation Program Study for CA-SDI-8303 and CA-SDI-8797 Locus C, City of Carlsbad, California. Prepared for City of Carlsbad.
- 2005 Grand Pacific Resorts Data Recovery and Index Sample Program for CA-SDI-8797, Area A, City of Carlsbad, California. Prepared for Grand Pacific Resorts Inc.
- 2004 "Near the Harris Site Quarry" Cultural Resource Data Recovery and Preservation Program for CA-SDI-13028, San Diego County, California. Prepared for Harbrecht Development, L.P.
- 2004 Cultural Resource Survey and Boundary Test Report for the Lilac Ranch Project, San Diego County, California. Prepared for Empire Companies.
- 2003 Cultural Resource Data Recovery and Preservation Program for CA-SDI-12027, San Diego County, California. Prepared for Harbrecht Development Inc.
- 2002 Data Recovery Program for the Pacbell Site CA-SDI-5633, San Marcos, California. Prepared for Joseph Wong Design Associates.
- 2001 McCrink Ranch Cultural Resource Test Program Additional Information for Selected Sites, San Diego County, California. Prepared for Shapouri & Associates.
- 2001 The Quail Ridge Project Cultural Resource Test Program, San Diego County, California. Prepared for Helix Environmental Planning, Inc.
- 2000 Cultural Resource Survey and Evaluation for the North Sand Sheet Full Buildout Program, Owens Lake, California. Prepared for CH2MHill.
- 1995 Final Report: Archaeological Investigations Conducted for the Abalone Cove Dewatering Wells, City of Rancho Palos Verdes Los Angeles County, California. Prepared for the City of Rancho Palos Verdes, Environmental Services.
- 1995 Final Report: A Class III Intensive Survey of a 100-Acre Sand and Gravel Mining Area, Imperial County, California. Prepared for the Lilburn Corporation.
- 1994 Final Report: Data Recovery Excavations at Five Late Prehistoric Archaeological Sites Along the Los Trancos Access Road, Newport Coast Planned Community, Orange County, California. Prepared for the Coastal Community Builders, a division of The Irvine Company.

Contributing Author

- 2019 Cultural Resources Study for the 3868-3900 Sepulveda Boulevard Project, City of Culver City, Los Angeles County, California. Prepared for Sepulveda Suites, Inc.
- 2019 Final Archaeological Data Recovery and Mitigation Monitoring Program for the Westin Hotel and Timeshare Project, City of Carlsbad, California. Prepared for Grand Pacific Resorts, Inc.
- 2019 Cultural Resources Study for the Commerce Logistics Center Project, 5200 Sheila Street, Commerce, California 90040. Prepared for T&B Planning, Inc.

- 2019 A Section 106 (NHPA) Historic Resource Study for the McElwain Project (SPL-2019-00565), Murrieta, Riverside County, California. Prepared for Murrieta Development II, LLC.
- 2019 Phase II Cultural Resource Study for the McElwain Project, City of Murrieta, California. Prepared for Murrieta Development II, LLC.
- 2018 A Phase I and II Cultural Resources Assessment for the Emerald Acres Project, Winchester, Riverside County. Prepared for T&B Planning, Inc.
- 2018 A Cultural Resources Monitoring Report for the Golden City Project, Tracts 28532-1, -2, -3, -4, and -5 and Tract 34445, City of Murrieta, California. Prepared for North Murrieta Community, LLC.
- 2018 An Archaeological/Historical Study for the Citracado Business Park West Project, City of Escondido. Prepared for Pacific Harmony Grove Development.
- 2015 Cultural Resource Survey and Evaluation Program for the Westin Hotel and Timeshare Project, City of Carlsbad, California. Prepared for Grand Pacific Resorts, Inc.
- 2015 A Class III Cultural Resource Study for the Habitat for Humanity Project, Perris, California. Habitat for Humanity Inland Valley.
- 2015 A Phase II Cultural Resource Assessment for the Munro Valley Solar Project, Inyo County, California. Prepared for Prepared for Ecos Energy, LLC.
- 2014 An Extended Phase I Cultural Resource Assessment for the Belvedere-Webster Project, City of Poway, California (APN 323-010-26-00). Prepared for Webster Realty Group.
- 2014 Cultural Resources Study for the Brook Forest Conservation Bank Project, Valley Center, San Diego County, California. Prepared for Brook Forest, LLC.
- 2014 A Phase I Cultural Resource Study for the Crystal View Lane Project, Poway, California. Prepared for Mark Catrambone.
- 2014 Cultural Resource Assessment for the Muscat Project, Poway, California (TPM 13-002; APN 278-180-44). Prepared for Mr. Ed Muscat.
- 2014 An Extended Phase I Cultural Resource Assessment for the Mulholland Highway Improvement Project, Cities of Calabasas and Los Angeles, Los Angeles County, California. City of Calabasas Public Works Department.
- 2014 Mitigation Monitoring Report for the 9th and Broadway Project, City of San Diego. Prepared for Bridge Housing Corporation.
- 2013 Cultural Resource Test Plan for the Cisterra Sempra Tower Project San Diego, California. Prepared for Eilar Associates, Inc.
- 2013 A Section 106 (NHPA) Cultural Resources Study for the Toscana Project, Riverside County, California. Prepared for Forestar Toscana, LLC.
- 2013 Cultural Resource Test Plan for the Gaslamp Hotel Project. Prepared for The Robert Green Company.
- 2012 Cultural Resource Test Plan for the Pinnacle International 15th and Island Project. Prepared for Pinnacle International.

- 2012 Cultural Resource Test Plan for the Horton Plaza Park Improvement Project. Prepared for the City of San Diego.
- 2012 Mitigation Monitoring Report for the T-Mobile West, LLC Telecommunications Candidate SD02867C (Presidio Park). Prepared for Michael Brandman Associates.
- 2012 Cultural Resource Test Plan for the Old Police Headquarters Project. Prepared for Terramar Retail Centers.
- 2012 Cultural Resource Test Plan for the Knight Residence Project. Prepared for Mr. Dennis Knight.
- 2012 Cultural Resource Test Plan for the 9th and Broadway Project. Prepared for Bridge Housing Corporation.
- 2012 Cultural Resource Test Plan for the Blue Sky Project. Prepared for Gray Development.
- 2011 An Archaeological Study for 1887 Viking Way Project, La Jolla, California. Prepared for Island Architects.
- 2011 A Cultural Resource Evaluation Program for the Otay Hills Quarry Project, San Diego County, California, Log No. 93-19-006J; P04-004; RPO4-001. Prepared for EnviroMINE.
- 2010 A Cultural Resource Evaluation Program for the Batchelder Lot Split Project, San Diego County, California, TPM 21177; KIVA PROJECT 10-0125593; APNs 247-010-10, -13. Prepared for David Batchelder.
- 2010 A Cultural Resources Survey and Evaluation Program for the Butterfield Trails Ranch Project, Valley Center, San Diego County, California, TM 5551, P 08-028, GPA 06-007, REZ 06-010, LOG NO. 06-08-033. Prepared for Wayne B. Hilbig.
- 2008 Lithic Analysis for Thirteen Sites Along the Transwestern Phoenix Expansion Project, Loops A and B. Prepared for Transwestern Pipeline Company, LLC.
- 2005 Cultural Resource Survey and Testing for the Star Ranch Property, San Diego, California.
- 2004 Cultural Resource Test Report for the Palomar Point Project: Site CA-SDI-16205, Carlsbad, California. Prepared for Lanikai Management Corp.
- 2004 Cultural Resource Survey and Test Report for the Canyon View Project, Carlsbad, California. Prepared for Shapouri & Associates.
- 2004 Cultural Resource Test Report for the Yamamoto Property: Site SDM-W-2046, Carlsbad, California. Prepared for Cunningham Consultants, Inc.
- 2004 Historical Resources Report for the Kuta and Mascari Properties, Otay Mesa, California. Prepared for Centex Homes.
- 2004 Cultural Resource Monitor and Test Report for the Encina Power Plant Project, Carlsbad, California. Prepared for Haley & Aldrich, Inc.
- 2004 Cultural Resource Test Report for Site CA-SDI-16788, Otay Mesa, California. Prepared for Otay Mesa Property, L.P.
- 2004 Cultural Resource Survey and Test Report for the Lonestar Project, Otay Mesa, San Diego

- County, California. Prepared for Otay Mesa Property, L.P.
- 2003 Cultural Resource Mitigation Program for the Torrey Ranch Site CA-SDI-5325, San Diego, California. Prepared for Garden Communities.
- 2003 Cultural Resource Survey and Test Report for the Johnson Canyon Parcel, Otay Mesa, San Diego County, California. Prepared for Otay Mesa Property, L.P.
- 2002 Cultural Resource Data Recovery Plan for the Shaw Project: Sites CA-SDI-13025 and CA-SDI-13067, San Diego County, California. Prepared for Shapouri & Associates.
- 2001 Archaeological Test Program for CA-SDI-14112 Mesa Norte Project, San Diego, California. Prepared for Hunsaker & Associates.
- 2001 The Vista-Oceanside Cultural Resource Survey and Test Program, Vista, California. Prepared for Shapouri & Associates.
- 2001 Cultural Resource Test Program for the Wilson Property, Carlsbad, California. Prepared for the City of Carlsbad.
- 2001 Cultural Resource Test Plan for the Oceanside-Escondido Project, County of San Diego, California. Prepared for Dudek & Associates.
- 2001 Cultural Resource Test Program for the Kramer Junction Expansion Project Adelanto, California. Prepared for AMEC.
- 2001 Cultural Resource Test Program for CA-SDI-12508 San Diego, California (LDR No. 99-1331). Prepared for Garden Communities.
- 2000 Archaeological Testing of Prehistoric Sites CASDI-14115 and CA-SDI-14116 for The Mesa Grande Project, San Diego, California. Prepared for Solana Mesa Partners, LLC.
- 2000 Cultural Resource Survey and Test Report for the Wetmore Property, Otay Mesa, San Diego County, California. Prepared for Mr. Andy Campbell.
- 2000 The Torrey Ranch Cultural Resource Test Program, San Diego County, California. Prepared for Garden Communities.
- 2000 Cultural Resource Test Results for the Otay Mesa Generating Project. Prepared for the California Energy Commission and Otay Mesa Generating Company, LCC.
- 2000 The Eternal Hills Cultural Resource Survey and Test Program, City of Oceanside, California. Prepared for Eternal Hills Memorial Park.
- 2000 The Quail Ridge Cultural Resource Test Program, San Diego County, California. Prepared for Helix Environmental Planning Inc.
- 2000 Cultural Resource Testing Program for CA-SDI-5652/H and CA-SDI-9474H SR 78/Rancho Del Oro Interchange Project, Oceanside, California. Prepared for Tetrattech Inc.
- 2000 Cultural Resource Test Results for a Portion of CA-SDI-8654 (Kuebler Ranch) Otay Mesa, San Diego County, California. Prepared for Shapouri & Associates.
- 2000 Historical/Archaeological Monitoring and Data Recovery Program for Prehistoric Site CA-SDI-48,

- Locus C Naval Base Point Loma, San Diego, California. Prepared for Department of the Navy, Southwest Division.
- 2000 Cultural Resource Evaluation Report for the Palomar College Science Building Project, San Marcos, California. Prepared for Parsons Engineering Science Inc.
- 1999 Cultural Resource Monitoring Report for the Village of Ystagua Water Main Break City of San Diego, California. Prepared for the City of San Diego Water Department.
- 1999 The Effect of Projectile Point Size on Atlatl Dart Efficiency in Lithic Technology Vol. 24, No 1 p (27-37).
- 1999 Cultural Resource Evaluation Report for the Oceanside-Escondido Bikeway Project, San Marcos, California. Prepared for City of San Marcos.
- 1999 5000 Years of Occupation: Cultural Resource Inventory and Assessment Program for the Carlsbad Municipal Golf Course Project City of Carlsbad, California. Prepared or Cotton/Beland/Associates, Inc.
- 1999 Silver Oaks Estates Cultural Resource Enhanced Survey and Test Report for a Portion of CA-SDI-7202 San Diego, California. Prepared for Helix Environmental Planning Inc.
- 1999 Historical Archaeological Test of a portion of CA-SDI-8303 for the Faraday Road Extension Carlsbad, California. Prepared for the City of Carlsbad.
- 1999 Cultural Resource Literature Review for the North Coast Transportation Study Arterial Streets Alternative San Diego County, California. Prepared for MLF/San Diego Association of Govt.
- 1998 Archaeological Test Report for a Portion of CA-SDI-9115/SDM-W-122 Carlsbad, California. Prepared for Industrial Developments International.
- 1998 Rainforest Ranch Cultural Resource Survey and Significance Test for Prehistoric Sites CA-SDI-14932, CA-SDI-14937, CA-SDI-14938, and CA-SDI-14946 County of San Diego, California. Prepared for the Boys and Girls Club of Inland North County.
- 1998 Cultural Resource Evaluation Report for the Oceanside-Escondido Bikeway Project San Marcos, California.
- 1998 Final Report: Cultural Resource Survey Report for the Sterling Property, Carlsbad, California. Prepared for SPT Holdings LCC.
- 1996 Final Report: Archaeological Survey and Test for the Huber Property Carlsbad, California. Prepared for Gene Huber.
- 1996 Final Report: Results of Phase II Test Excavations and Phase III Data Recovery Excavations at Nine Archaeological Sites Within the Newport Coast Planned Community Phase III Entitlement Area, San Joaquin Hills, Orange County, California. Prepared for Coastal Community Builders, a division of The Irvine Company.
- 1995 Preliminary Report: Phase II Test Results From Nine Prehistoric Archaeological Sites within the Proposed Upper Newport Bay Regional County Park. Prepared for EDAW, Inc.
- 1995 Final Report: A Phase II Test Excavation at CA-ORA-136, Block 800 City of Newport Beach, Orange County California. Prepared for the Irvine Apartment Communities.

APPENDIX B

Archaeological Records Search Results

(Deleted for Public Review; Bound Separately)

APPENDIX C

NAHC Sacred Lands File Search Results

(Deleted for Public Review; Bound Separately)

APPENDIX D

Confidential Map

(Deleted for Public Review; Bound Separately)